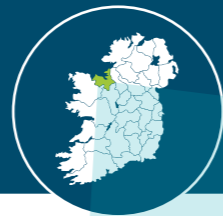


A Sustainable Mobility Index for Rural Towns in Ireland's Western Region

Tubbercurry, Co. Sligo

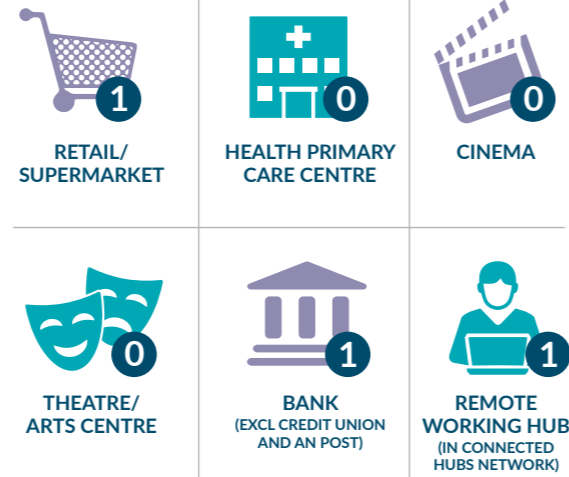
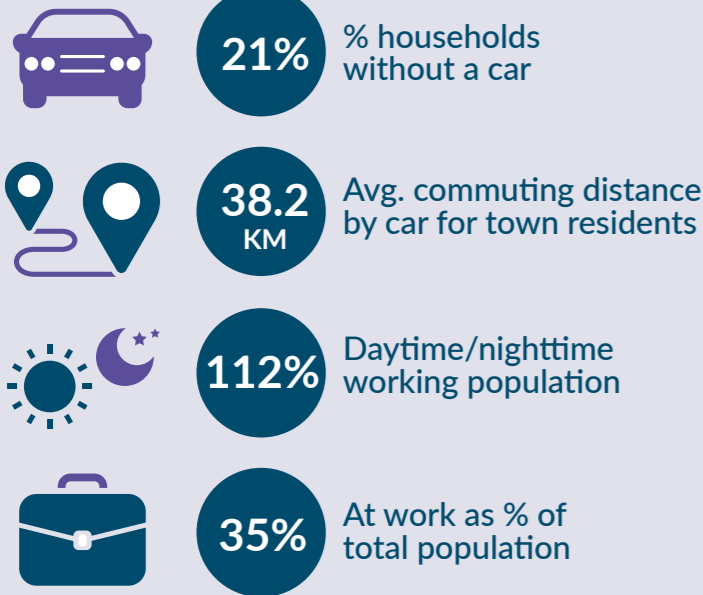
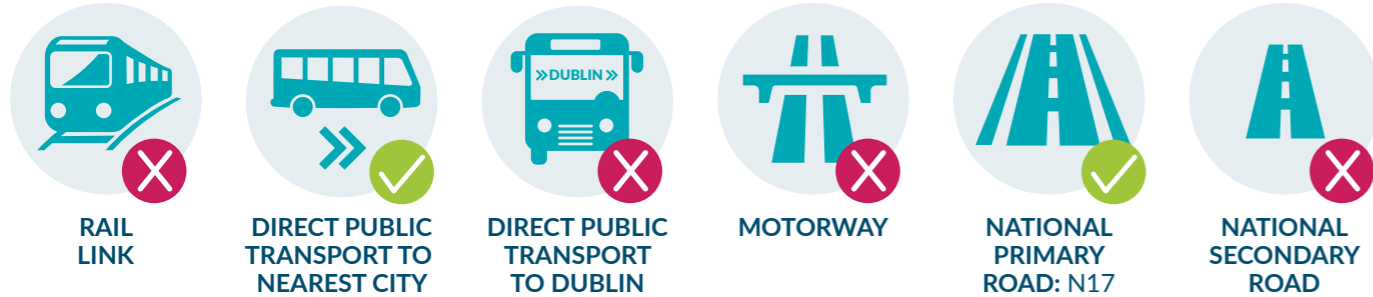


TOWN POPULATION:
1,986
POPULATION CHANGE 1996-2016:
+82.4%



14% POPULATION OVER 65

28% POPULATION UNDER 18



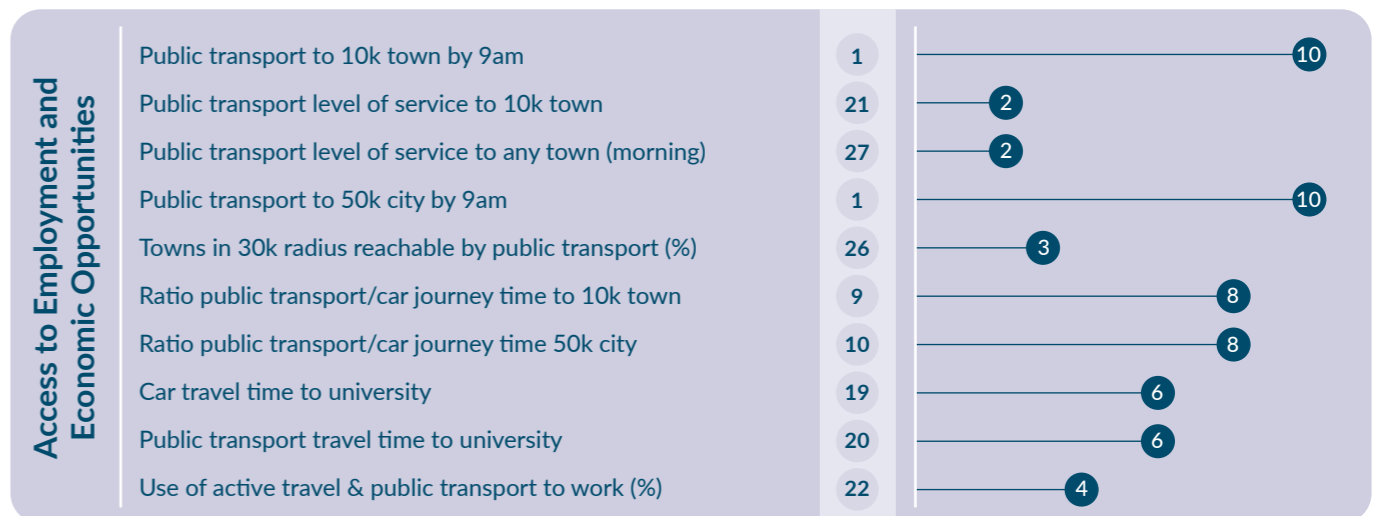
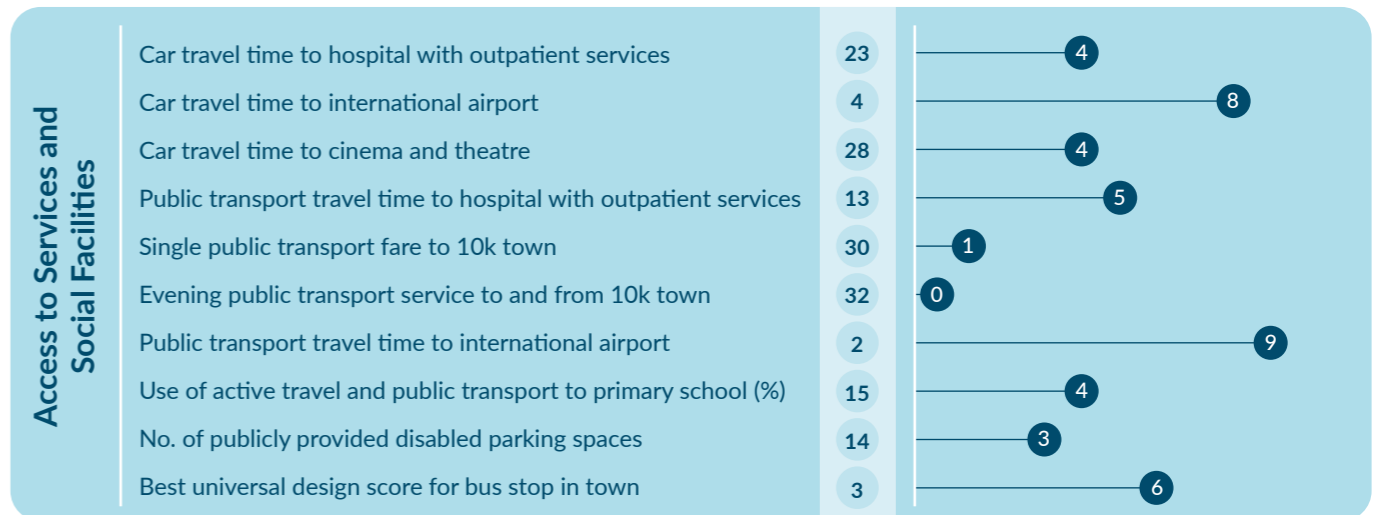
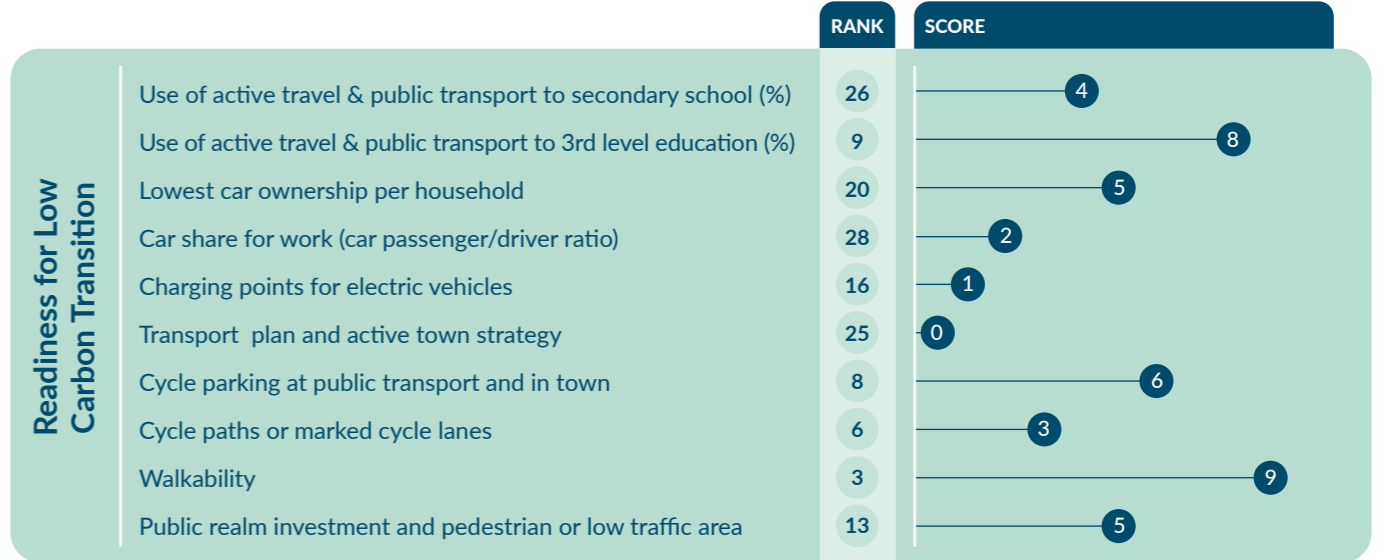
Median household gross income:
€29,562



WDC Mobility Index

	RANK	SCORE
WDC Mobility Index	19	146
Readiness for Low Carbon Transition	21	43
Access to Services and Social Facilities	19	44
Access to Employment and Economic Opportunities	21	59

	RANK	SCORE
WDC Mobility Index	19	146
Readiness for Low Carbon Transition	21	43
Access to Services and Social Facilities	19	44
Access to Employment and Economic Opportunities	21	59



To learn more about the development of the WDC's SMI 2022 for Rural Towns, see our full report [here](#).