

# A Sustainable Mobility Index for Rural Towns in Ireland's Western Region

## Tuam, Co. Galway

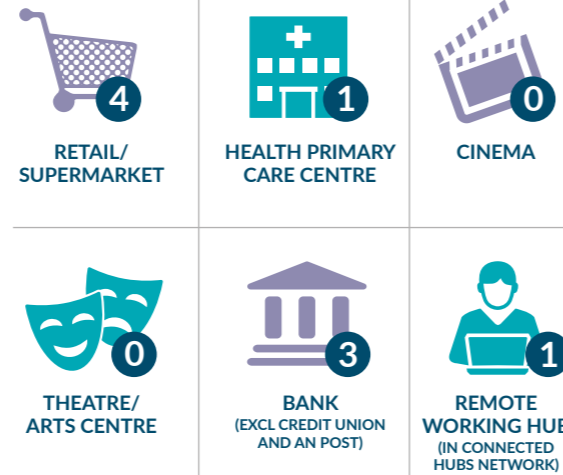
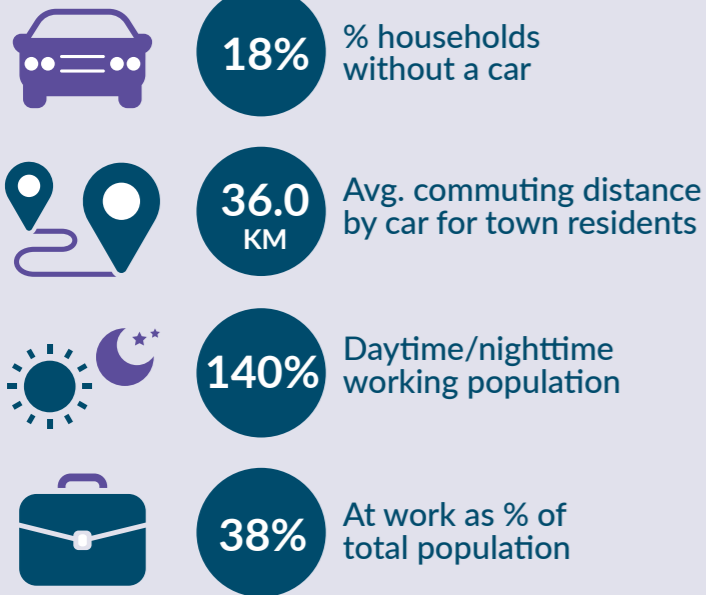
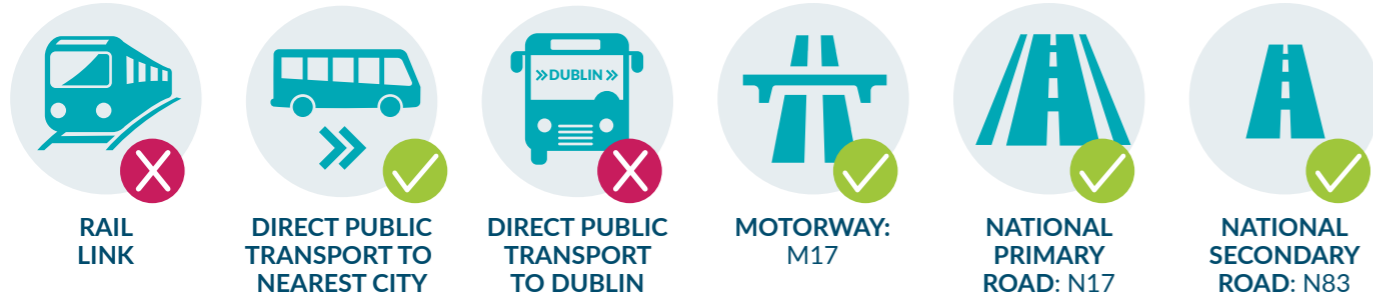


TOWN POPULATION:  
**8,767**  
POPULATION CHANGE 1996-2016:  
**+55.8%\***



**13%** POPULATION OVER 65

**28%** POPULATION UNDER 18



Median household gross income:  
**€35,174**

\*Changes made to boundary of town for Census 2016 so not directly comparable with 1996 population



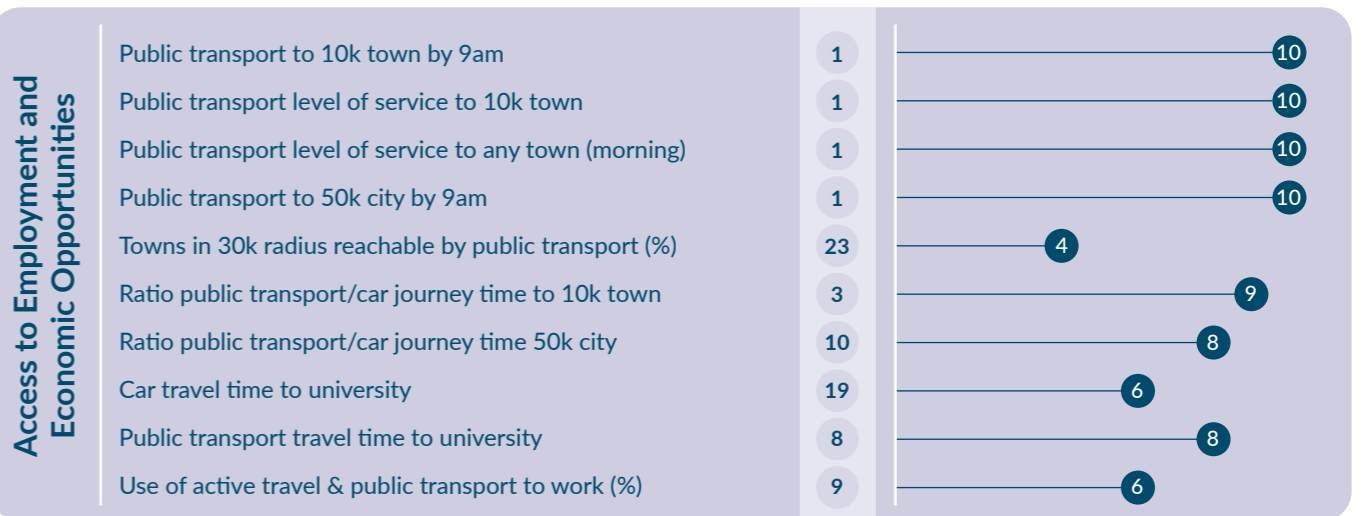
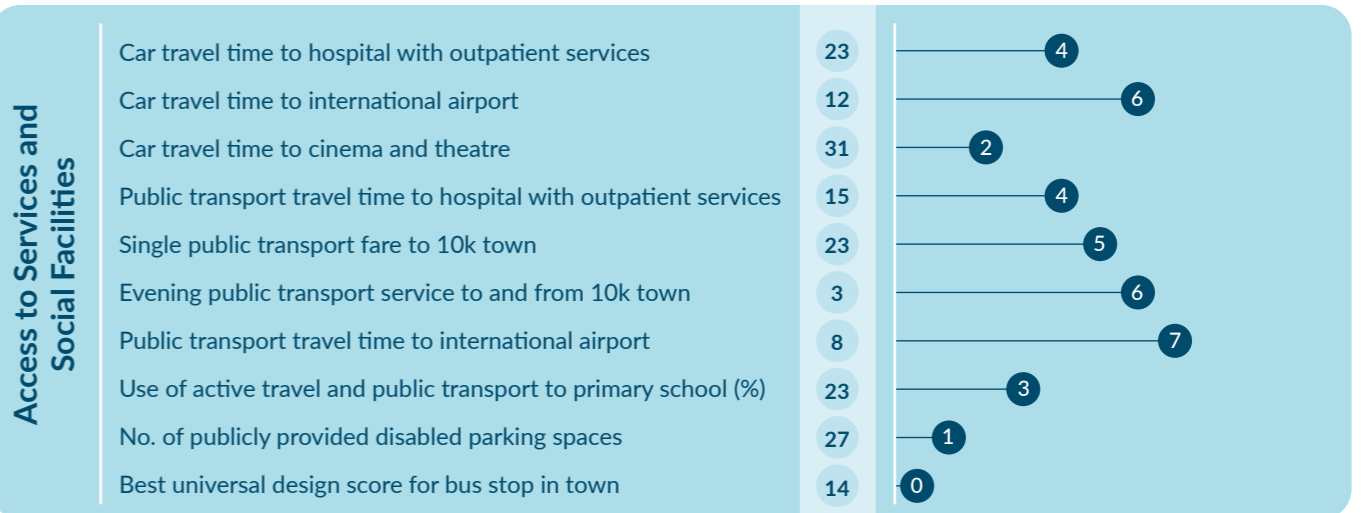
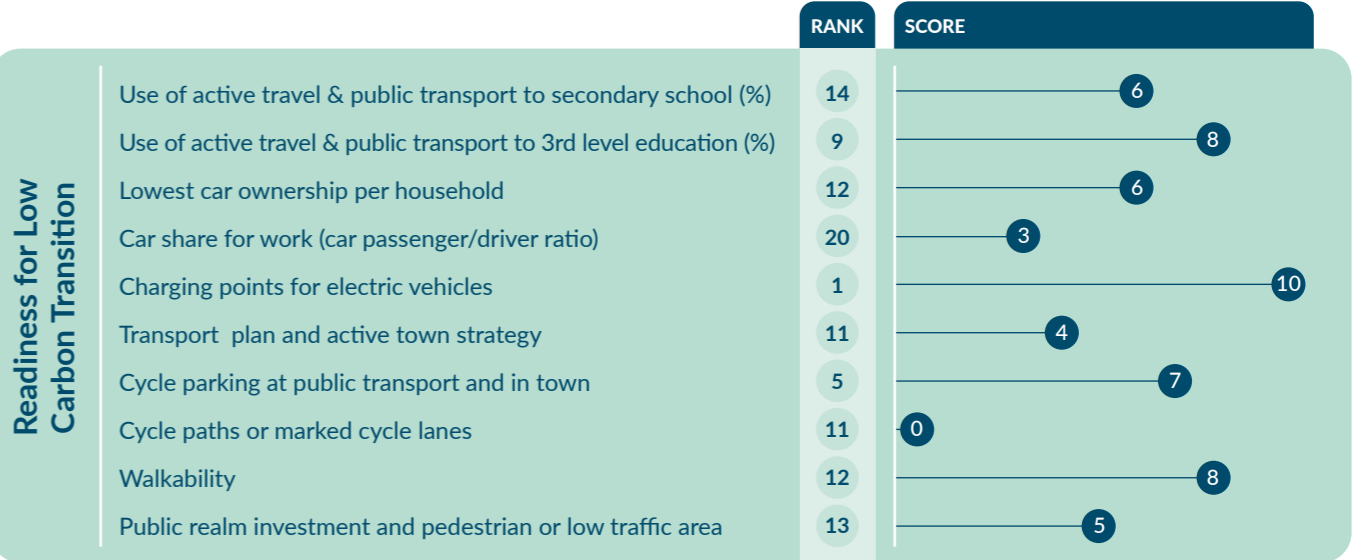
### WDC Mobility Index

Readiness for Low Carbon Transition

Access to Services and Social Facilities

Access to Employment and Economic Opportunities

RANK	SCORE
5	176
4	57
26	38
1	81



To learn more about the development of the WDC's SMI 2022 for Rural Towns, see our full report [here](#).