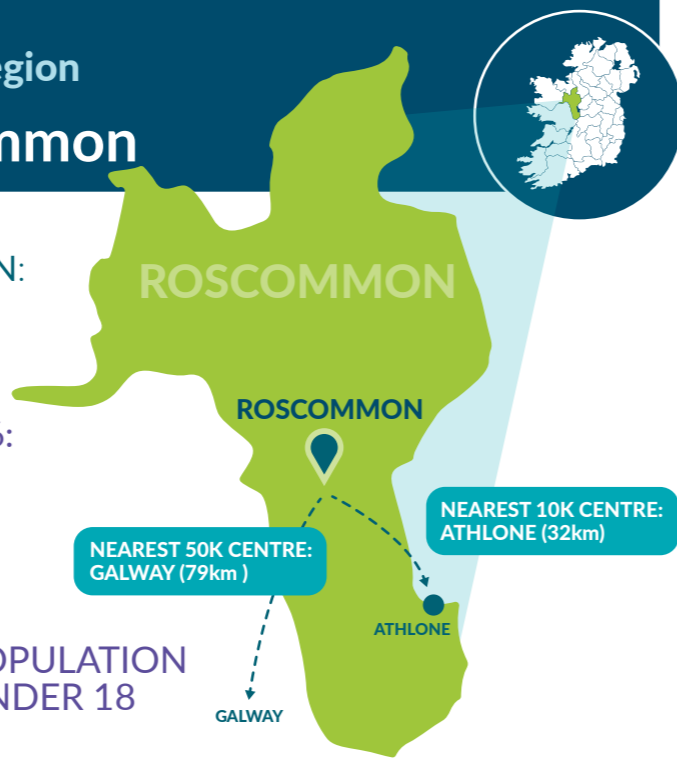


A Sustainable Mobility Index for Rural Towns in Ireland's Western Region

Roscommon, Co. Roscommon

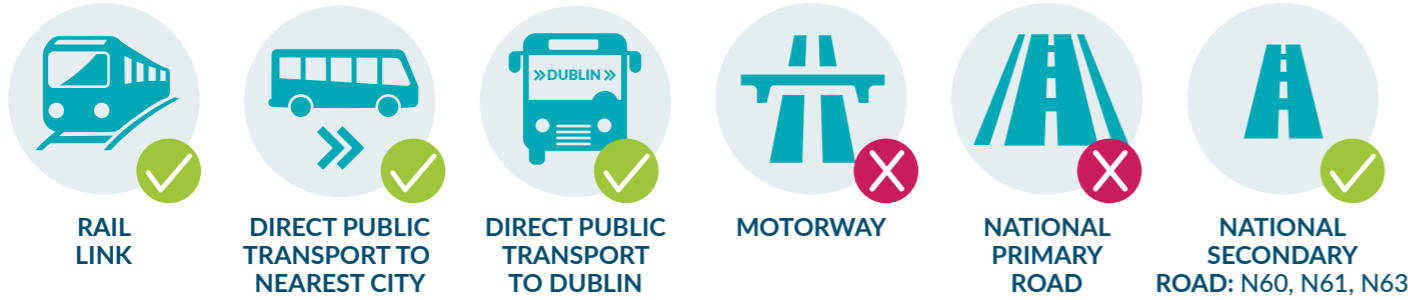


TOWN POPULATION:
5,876
POPULATION CHANGE 1996-2016:
+50.1%



16% POPULATION OVER 65

27% POPULATION UNDER 18

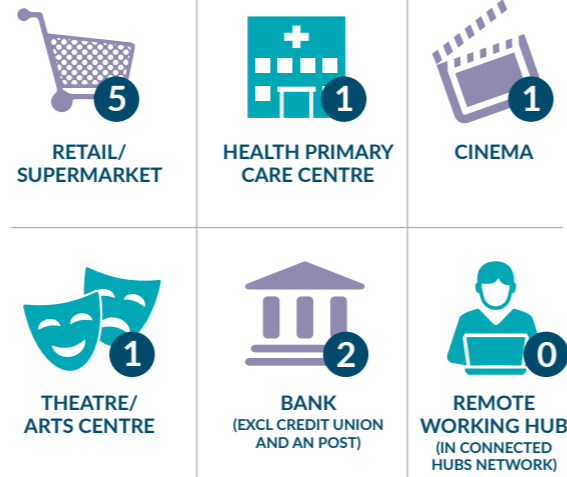


18% % households without a car

30 KM Avg. commuting distance by car for town residents

215% Daytime/nighttime working population

39% At work as % of total population



Median household gross income:
€39,066



WDC Mobility Index

Readiness for Low Carbon Transition

Access to Services and Social Facilities

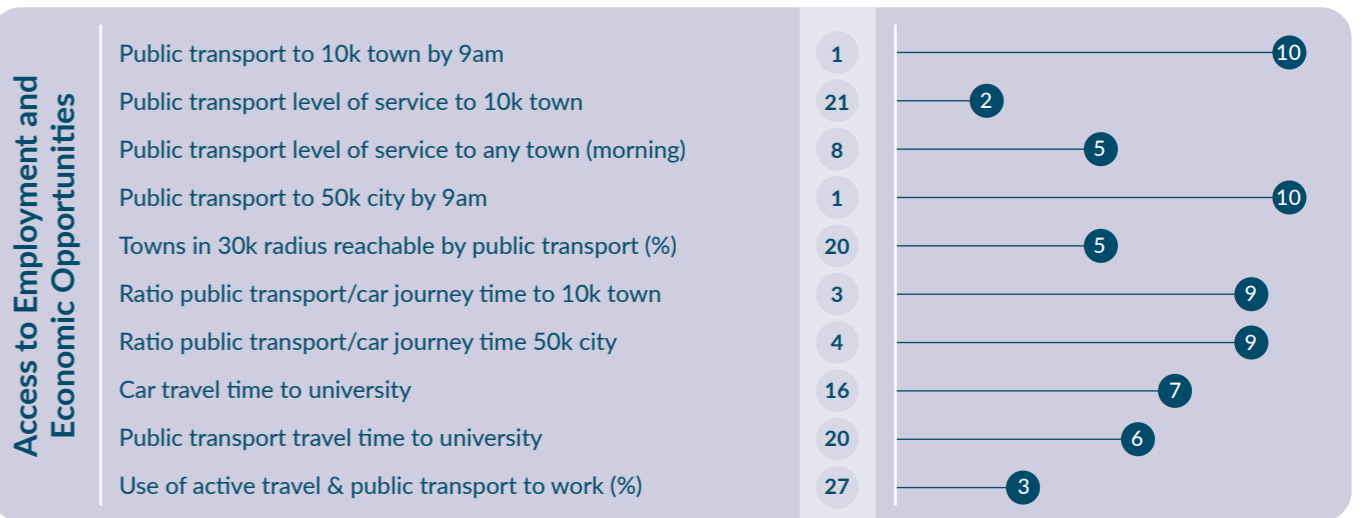
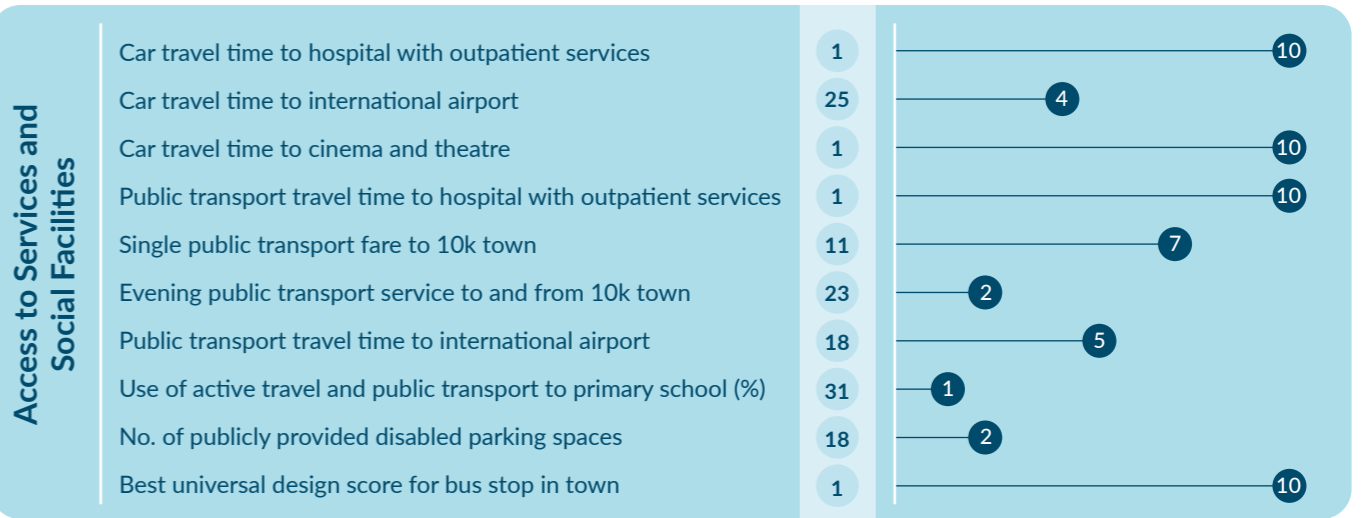
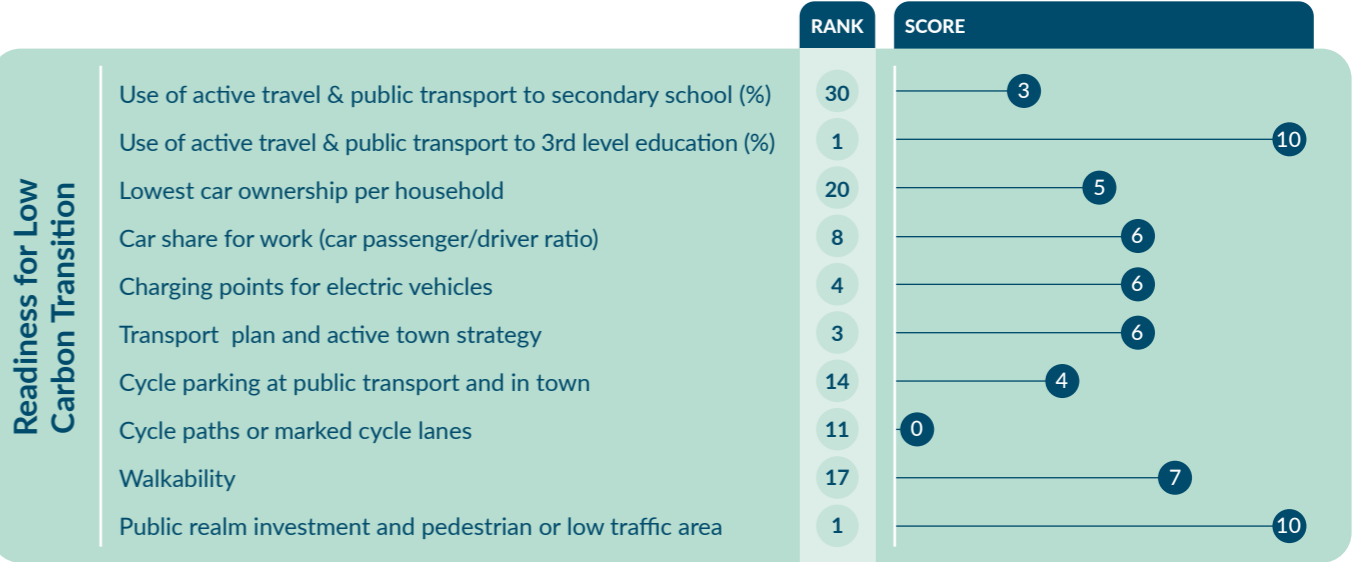
Access to Employment and Economic Opportunities

RANK SCORE
3 184

4 57

4 61

14 66



To learn more about the development of the WDC's SMI 2022 for Rural Towns, see our full report [here](#).