

A Sustainable Mobility Index for Rural Towns in Ireland's Western Region

Maigh Cuilinn, Co. Galway

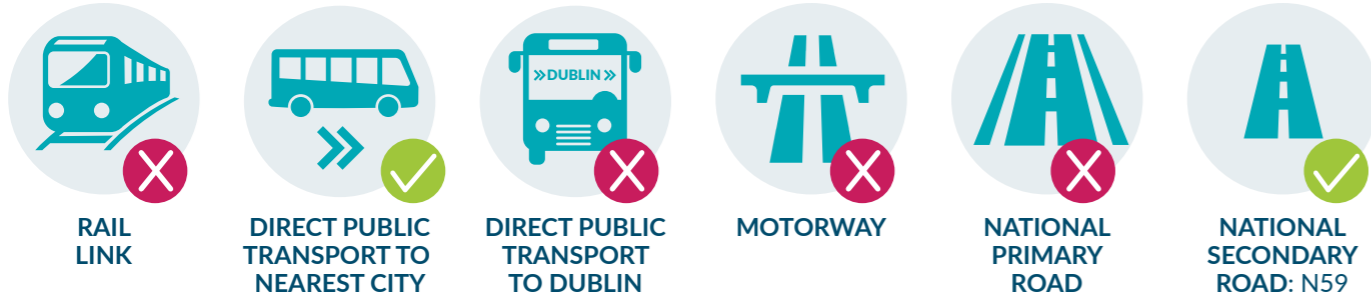


TOWN POPULATION:
1,704
POPULATION CHANGE 1996-2016:
+183.5%



12% POPULATION OVER 65

29% POPULATION UNDER 18

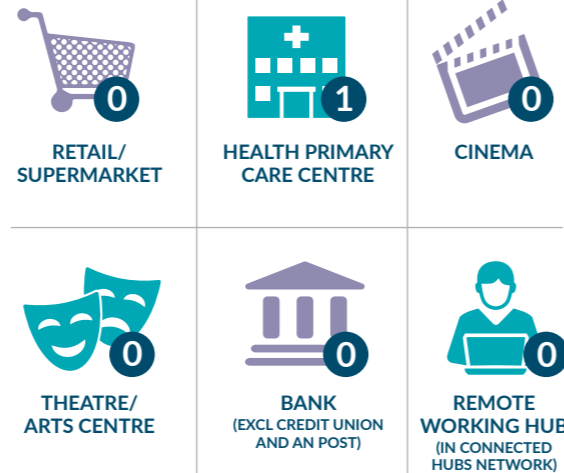


6% % households without a car

32.6 KM Avg. commuting distance by car for town residents

62% Daytime/nighttime working population

44% At work as % of total population



Median household gross income:
€54,153



WDC Mobility Index

Readiness for Low Carbon Transition

Access to Services and Social Facilities

Access to Employment and Economic Opportunities

RANK SCORE
28 129

34 16

13 46

10 67

