

# A Sustainable Mobility Index for Rural Towns in Ireland's Western Region

## Lifford, Co. Donegal

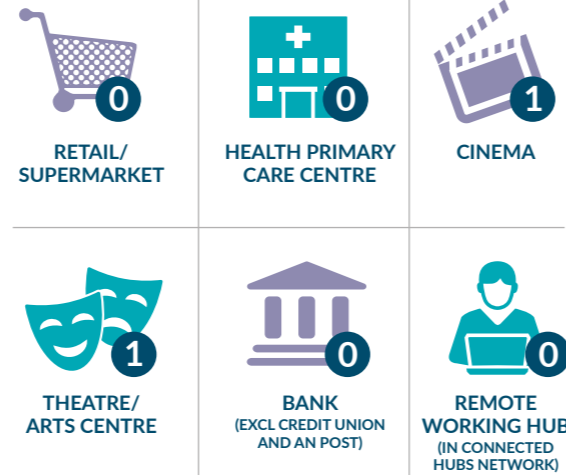
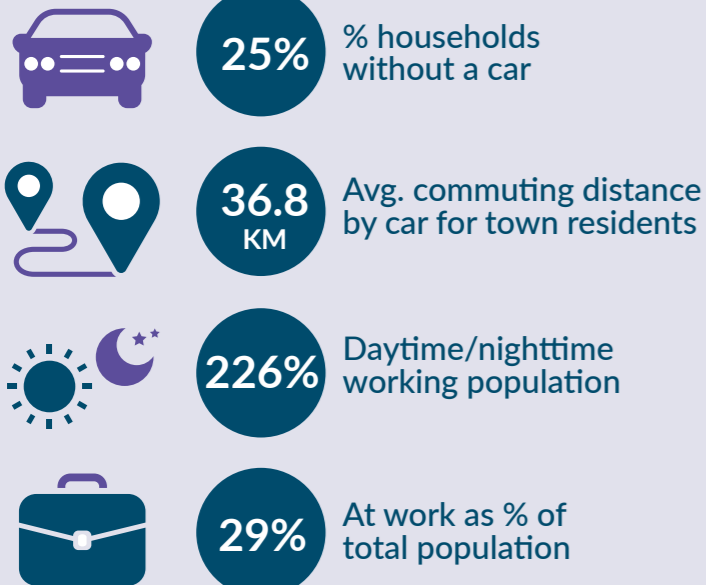
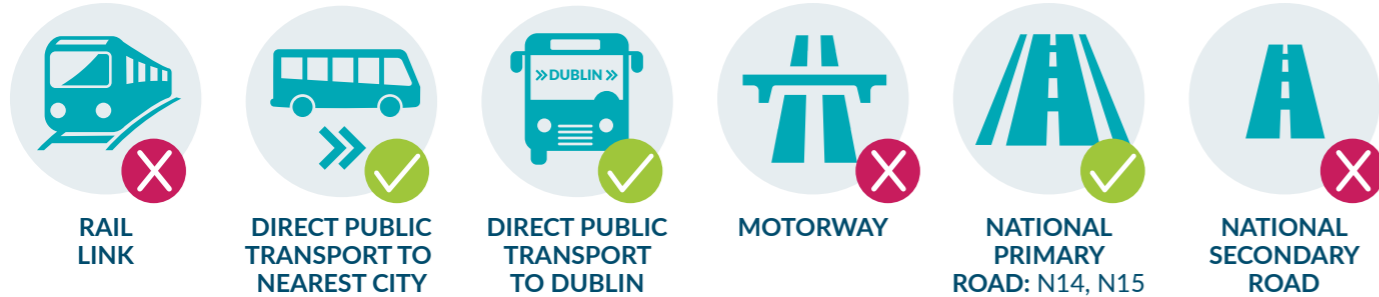


TOWN POPULATION: **1,626**

POPULATION CHANGE 1996-2016: **+27.5%**

**13%** POPULATION OVER 65

**27%** POPULATION UNDER 18



Median household gross income: **€26,087**

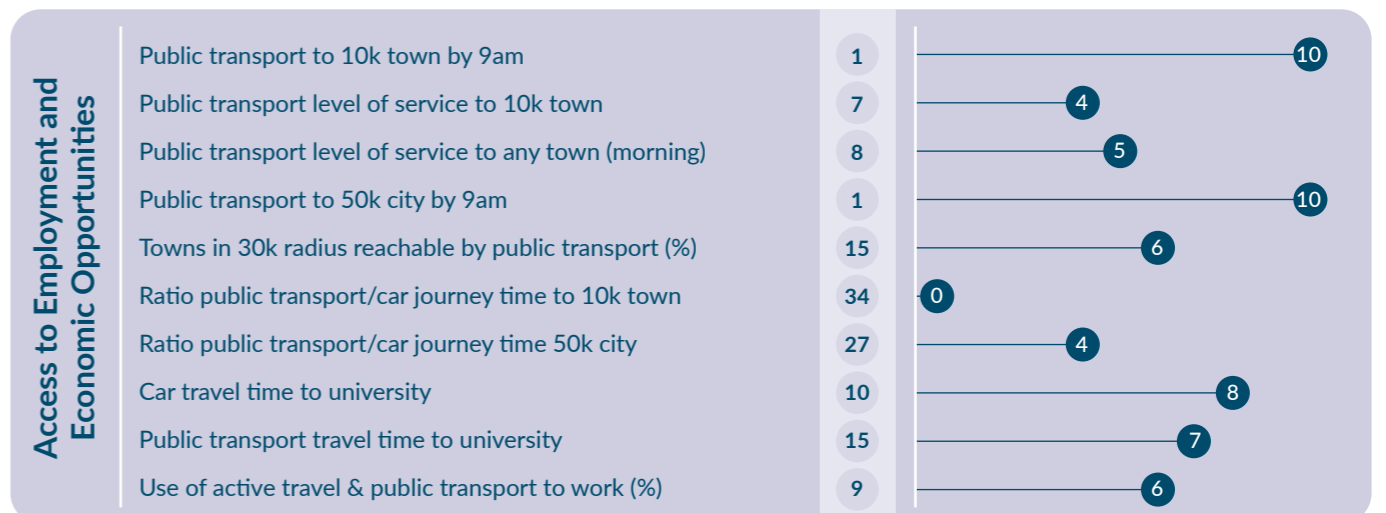
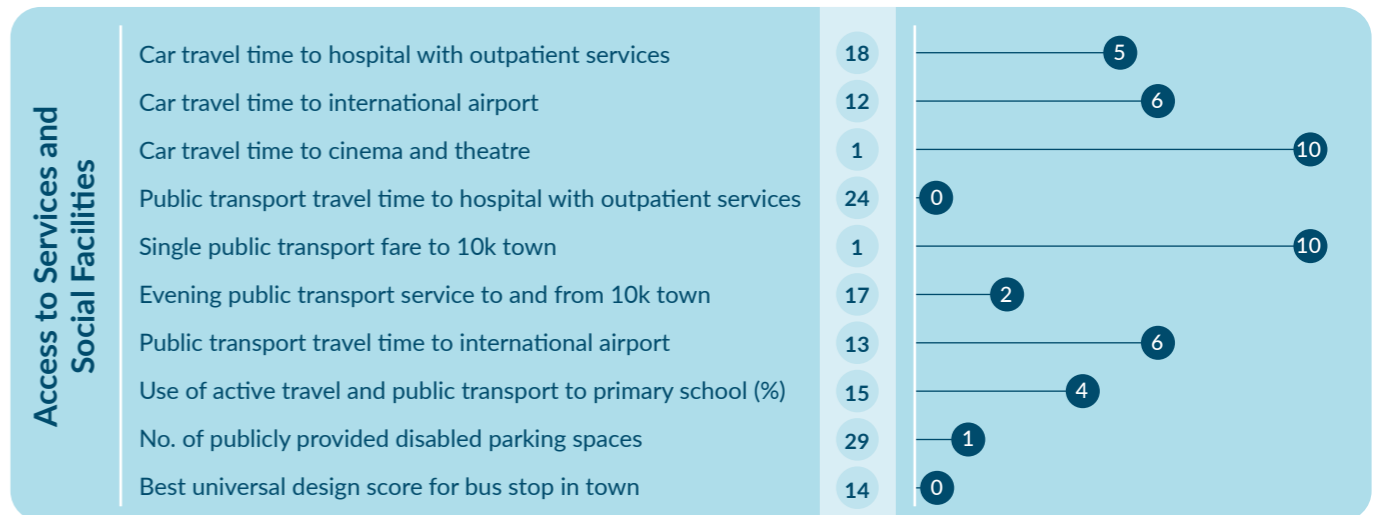
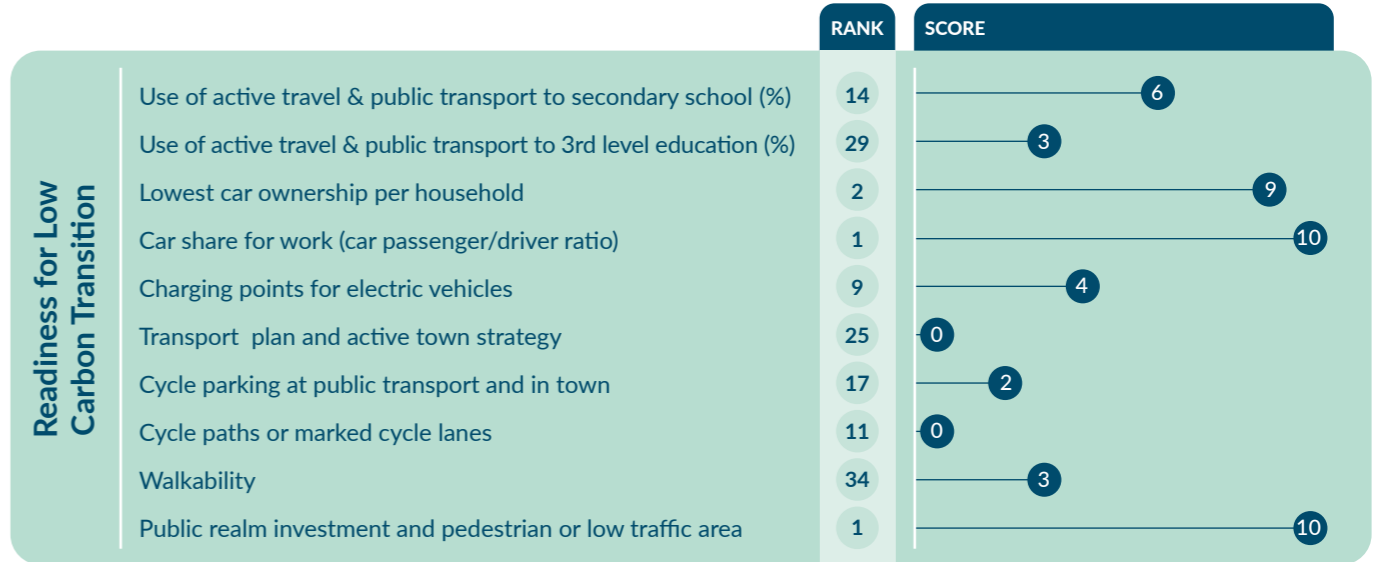
\*Changes made to boundary of town for Census 2016 so not directly comparable with 1996 population



### WDC Mobility Index

	RANK	SCORE
WDC Mobility Index	16	151
Readiness for Low Carbon Transition	14	47
Access to Services and Social Facilities	17	44
Access to Employment and Economic Opportunities	19	60

	RANK	SCORE
WDC Mobility Index	16	151
Readiness for Low Carbon Transition	14	47
Access to Services and Social Facilities	17	44
Access to Employment and Economic Opportunities	19	60



To learn more about the development of the WDC's SMI 2022 for Rural Towns, see our full report [here](#).