

A Sustainable Mobility Index for Rural Towns in Ireland's Western Region

Donegal, Co. Donegal

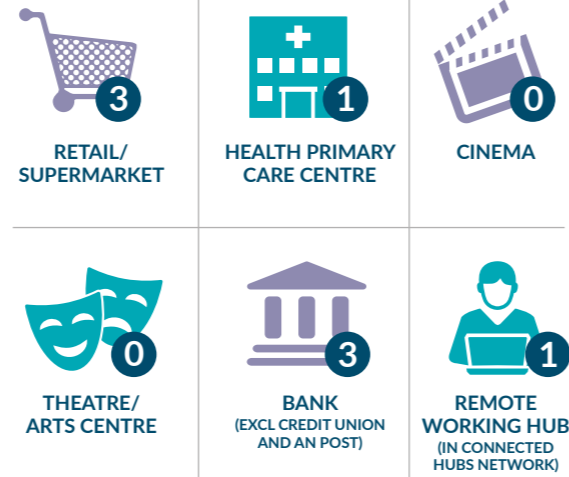
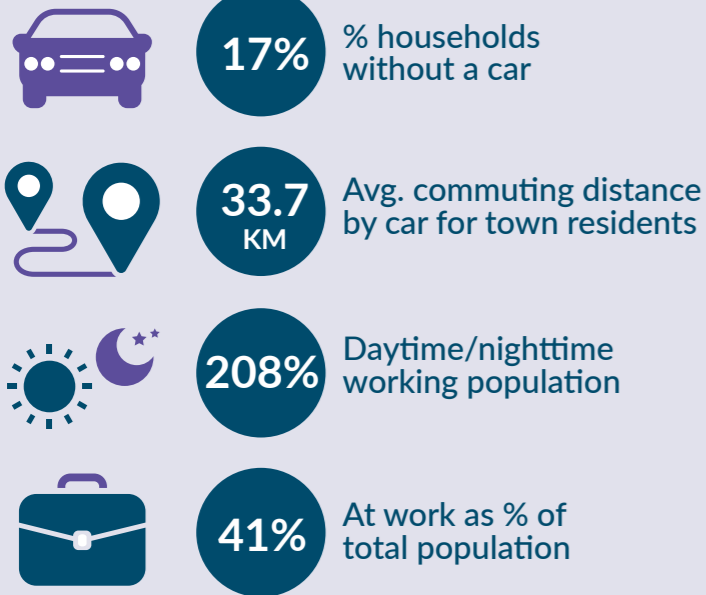
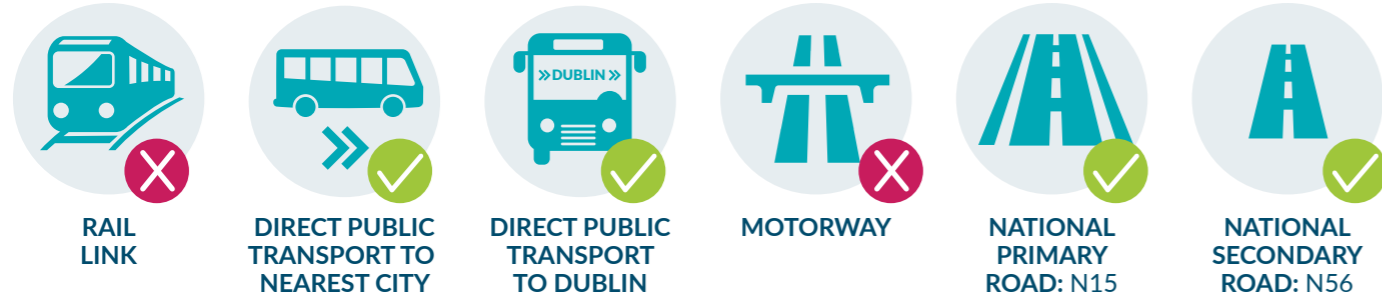


TOWN POPULATION:
2,618
POPULATION CHANGE 1996-2016:
+14.0%



20% POPULATION OVER 65

21% POPULATION UNDER 18



Median household gross income:
€34,306



WDC Mobility Index

Readiness for Low Carbon Transition	14	47
Access to Services and Social Facilities	34	22
Access to Employment and Economic Opportunities	27	55

RANK
29
SCORE
124

