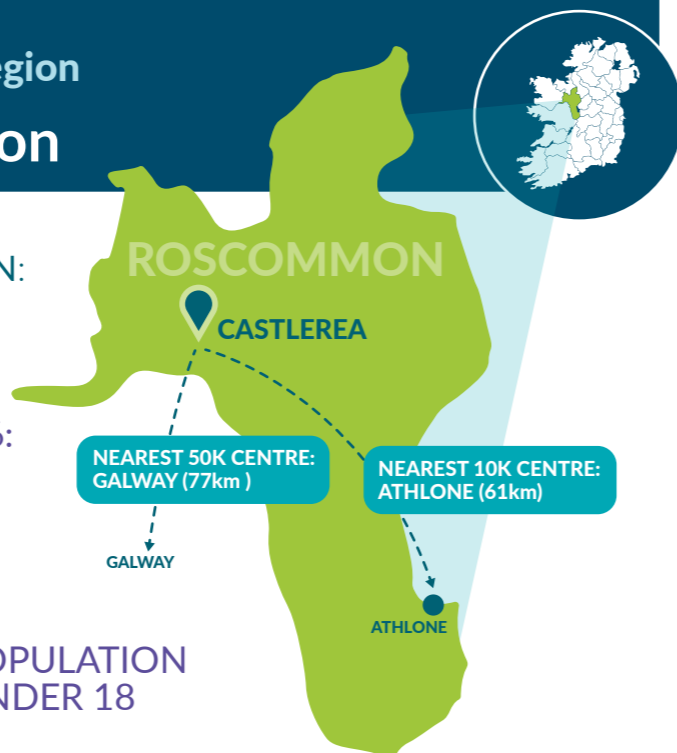


A Sustainable Mobility Index for Rural Towns in Ireland's Western Region

Castlerea, Co. Roscommon

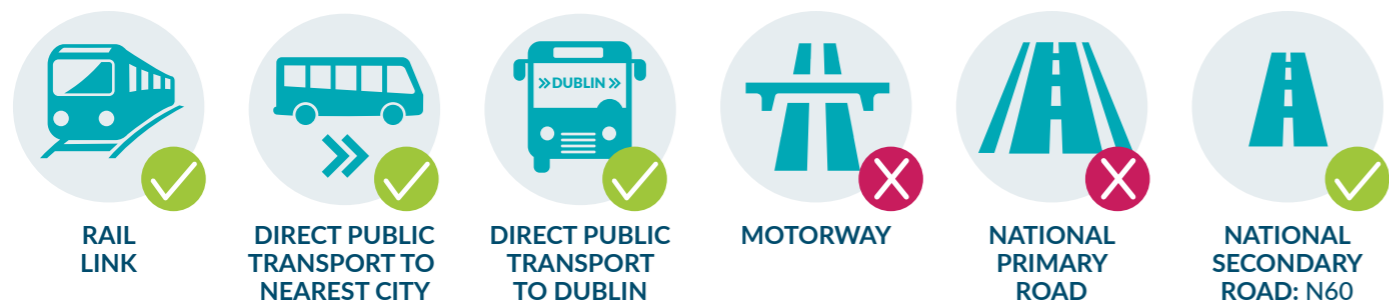


TOWN POPULATION:
1,992
POPULATION CHANGE 1996-2016:
+11.3%



23% POPULATION OVER 65

19% POPULATION UNDER 18



27% % households without a car



34.0 KM Avg. commuting distance by car for town residents



175% Daytime/nighttime working population



34% At work as % of total population

Median household gross income:
€28,929



2 RETAIL/SUPERMARKET



1 HEALTH PRIMARY CARE CENTRE



0 CINEMA



0 THEATRE/ARTS CENTRE



2 BANK (EXCL CREDIT UNION AND AN POST)



1 REMOTE WORKING HUB (IN CONNECTED HUBS NETWORK)



WDC Mobility Index

	RANK	SCORE
WDC Mobility Index	21	141
Readiness for Low Carbon Transition	25	38
Access to Services and Social Facilities	12	46
Access to Employment and Economic Opportunities	23	57

