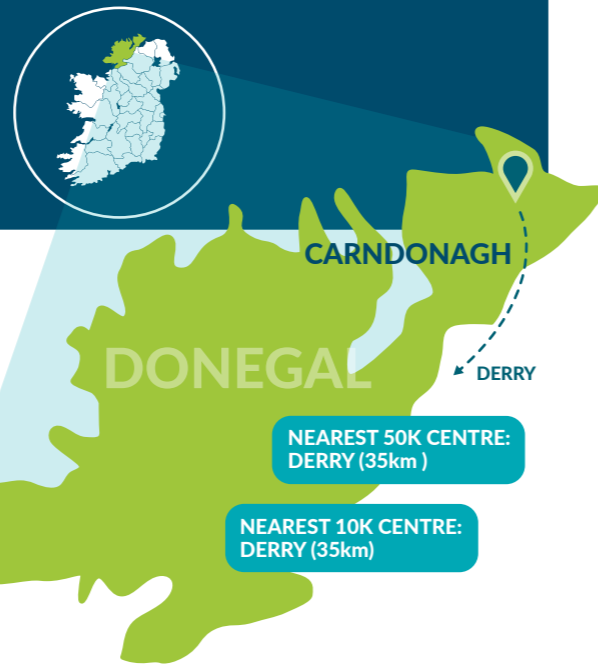


# A Sustainable Mobility Index for Rural Towns in Ireland's Western Region

## Carndonagh, Co. Donegal

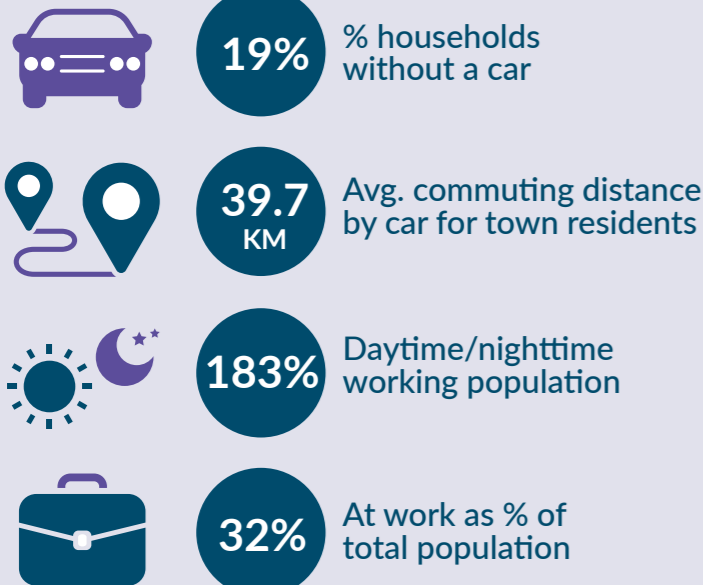
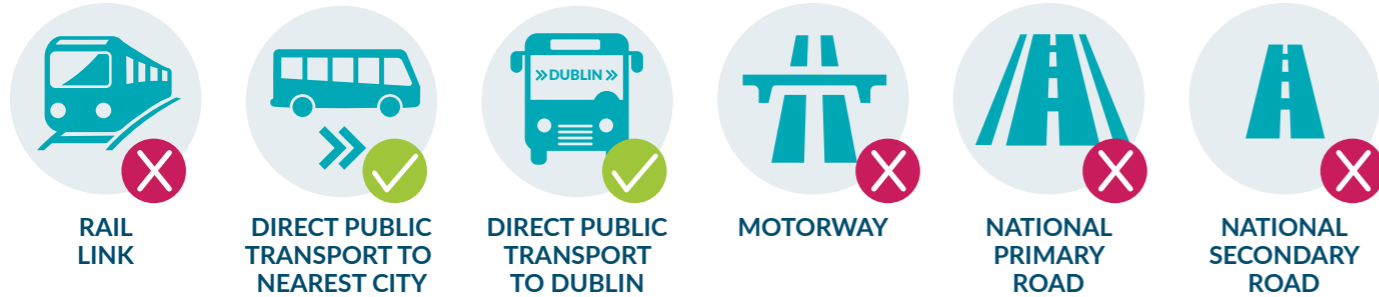


TOWN POPULATION: **2,471**

POPULATION CHANGE 1996-2016: **+56.4%**

**15%** POPULATION OVER 65

**28%** POPULATION UNDER 18



Median household gross income: **€25,496**



### WDC Mobility Index

	RANK	SCORE
WDC Mobility Index	30	123
Readiness for Low Carbon Transition	17	46
Access to Services and Social Facilities	32	28
Access to Employment and Economic Opportunities	30	49

