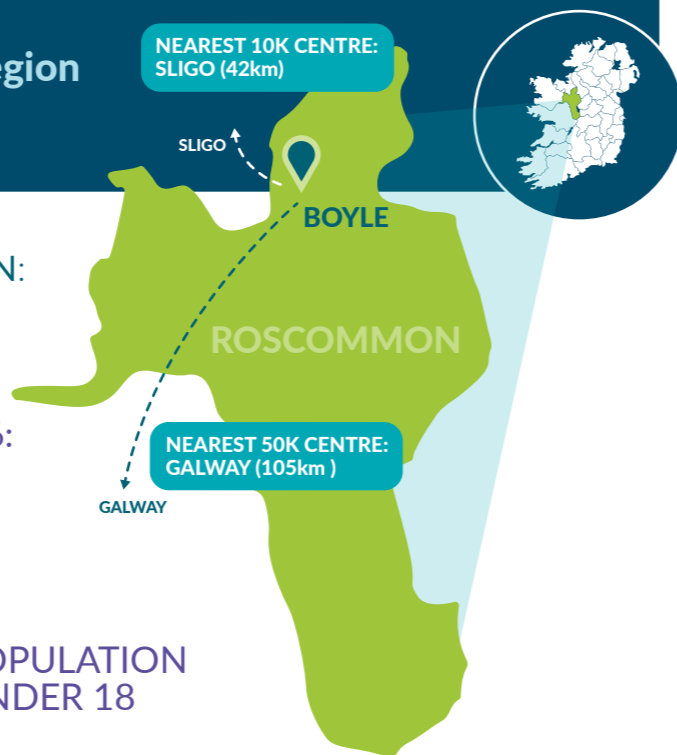


# A Sustainable Mobility Index for Rural Towns in Ireland's Western Region

## Boyle, Co. Roscommon

NEAREST 10K CENTRE:  
SLIGO (42km)

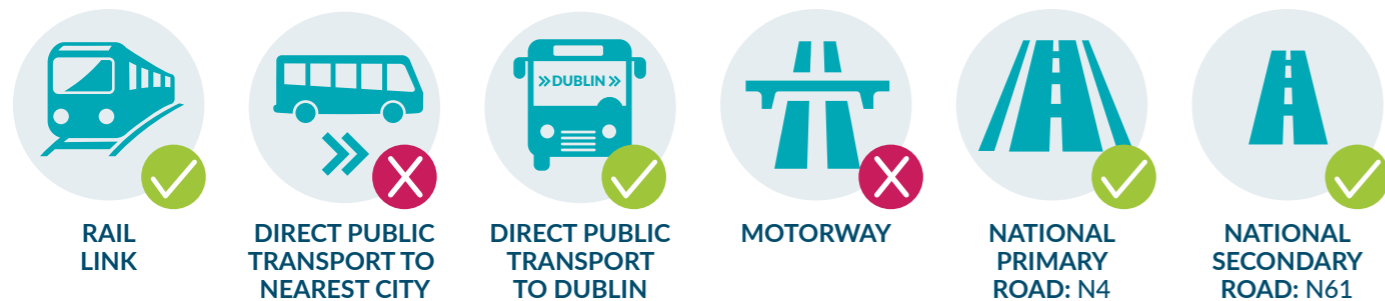
NEAREST 50K CENTRE:  
GALWAY (105km)



TOWN POPULATION:  
**2,568**  
POPULATION CHANGE 1996-2016:  
**+15.6%\***

**24%** POPULATION OVER 65

**22%** POPULATION UNDER 18



**25%** % households without a car



**37.9 KM** Avg. commuting distance by car for town residents



**155%** Daytime/nighttime working population



**32%** At work as % of total population

Median household gross income:  
**€28,922**



\*Changes made to boundary of town for Census 2016 so not directly comparable with 1996 population



### WDC Mobility Index

	RANK	SCORE
WDC Mobility Index	18	150
Readiness for Low Carbon Transition	7	56
Access to Services and Social Facilities	25	40
Access to Employment and Economic Opportunities	28	54

