

A Sustainable Mobility Index for Rural Towns in Ireland's Western Region

Ballyhaunis, Co. Mayo

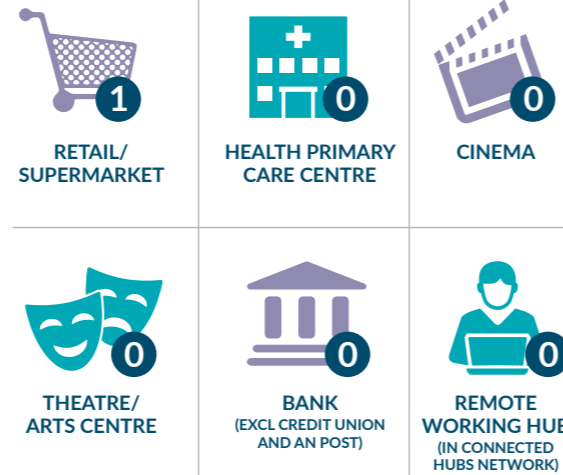
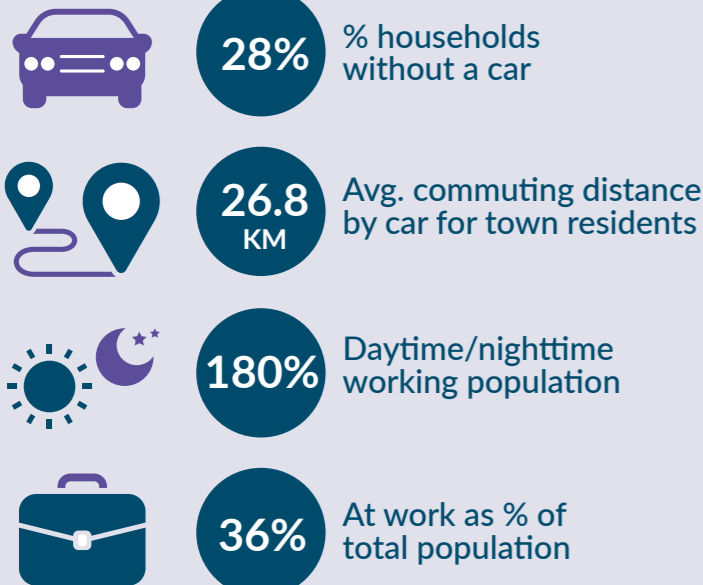
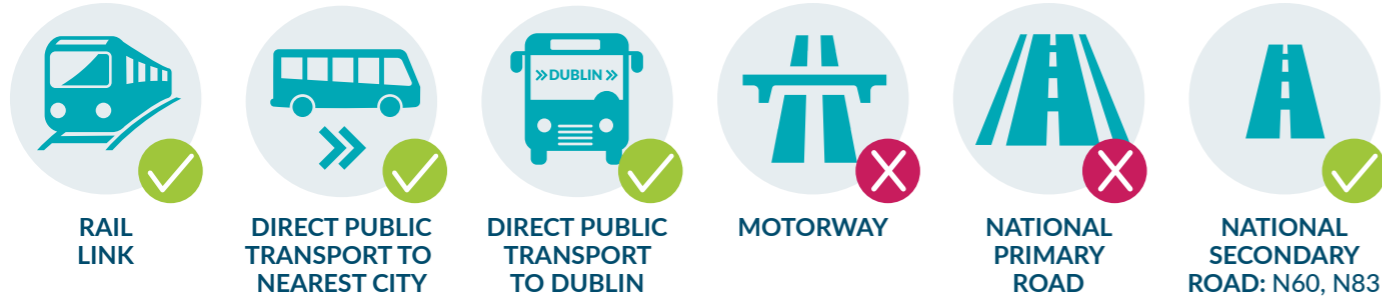


TOWN POPULATION:
2,366
POPULATION CHANGE 1996-2016:
+83.8%



11% POPULATION OVER 65

29% POPULATION UNDER 18



Median household gross income:
€32,962



WDC Mobility Index

| | RANK | SCORE |
|---|------|-------|
| WDC Mobility Index | 25 | 136 |
| Readiness for Low Carbon Transition | 10 | 51 |
| Access to Services and Social Facilities | 28 | 36 |
| Access to Employment and Economic Opportunities | 30 | 49 |

| | RANK | SCORE |
|---|------|-------|
| WDC Mobility Index | 25 | 136 |
| Readiness for Low Carbon Transition | 10 | 51 |
| Access to Services and Social Facilities | 28 | 36 |
| Access to Employment and Economic Opportunities | 30 | 49 |

