

A Sustainable Mobility Index for Rural Towns in Ireland's Western Region

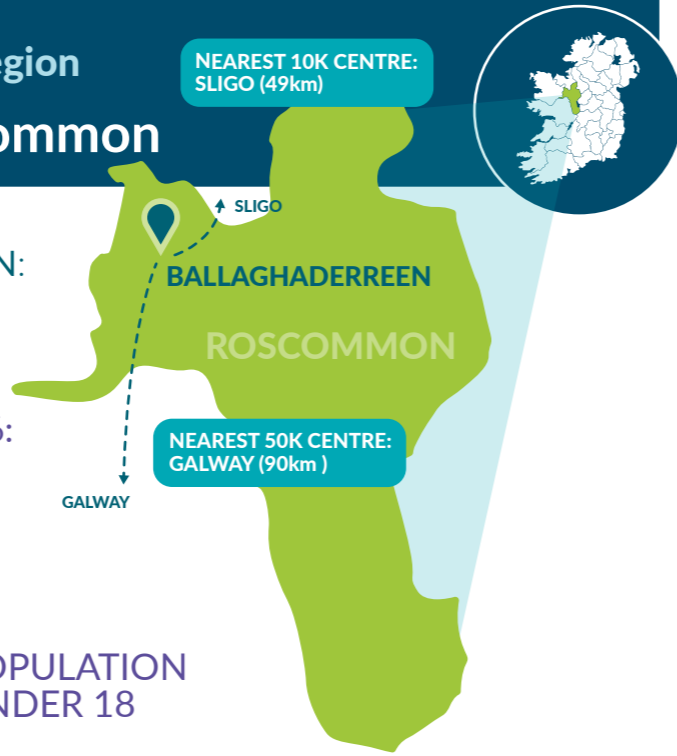
Ballaghaderreen, Co. Roscommon

NEAREST 10K CENTRE:
SLIGO (49km)

NEAREST 50K CENTRE:
GALWAY (90km)

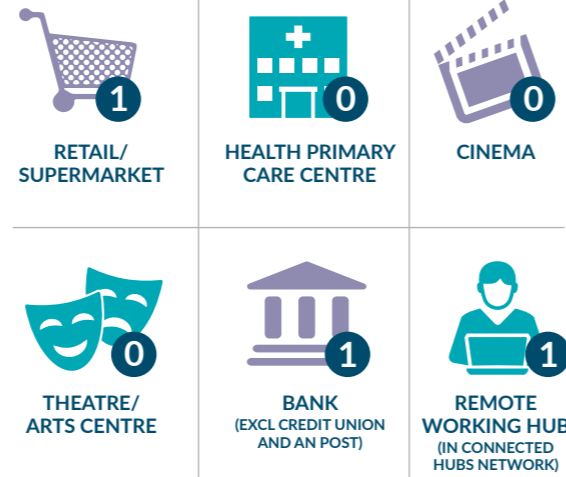
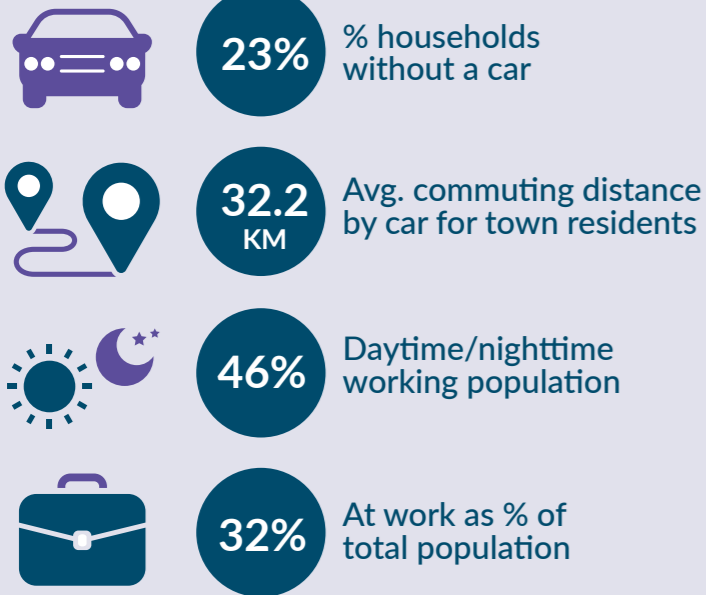
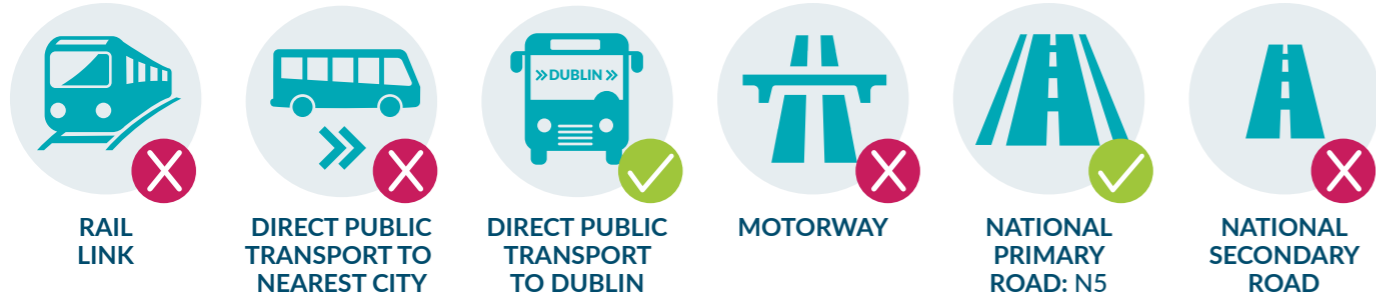


TOWN POPULATION:
1,808
POPULATION CHANGE 1996-2016:
+44.9%



17% POPULATION OVER 65

23% POPULATION UNDER 18



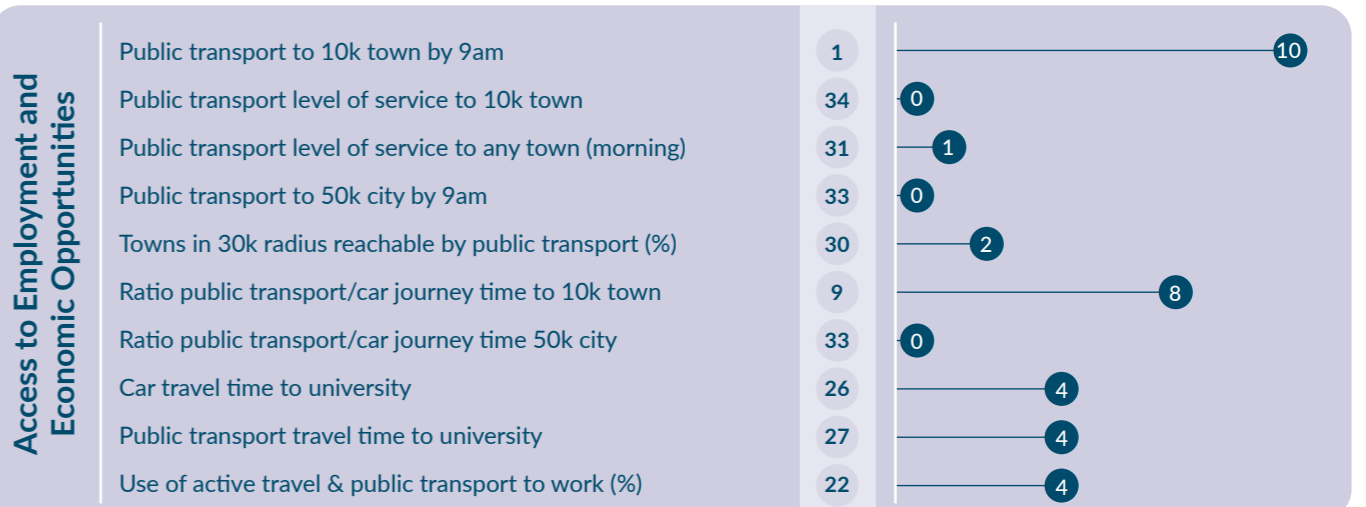
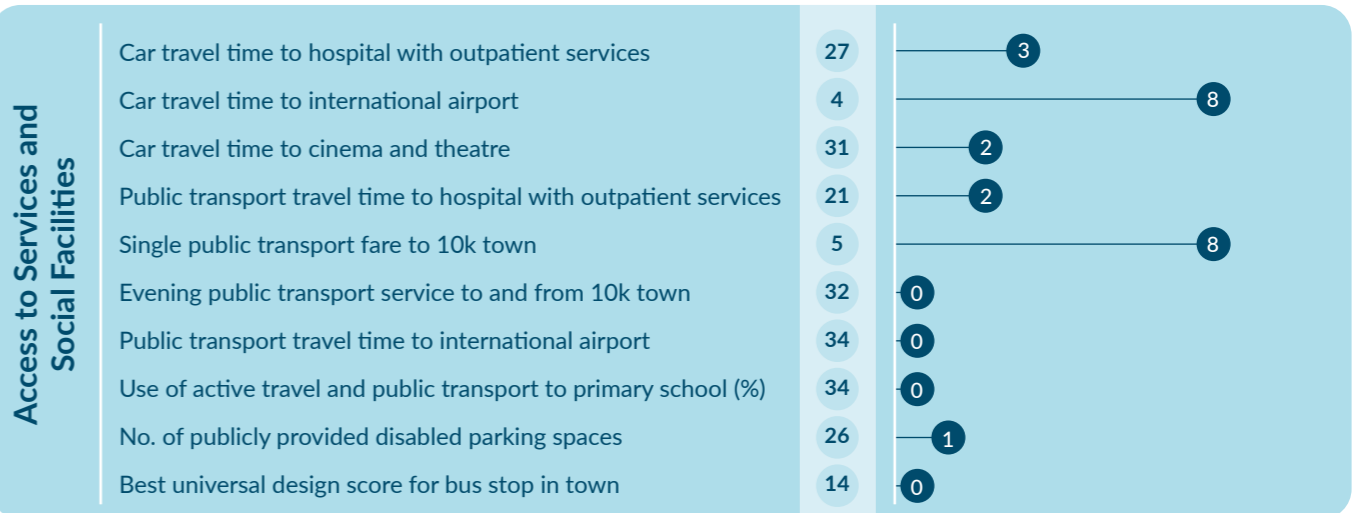
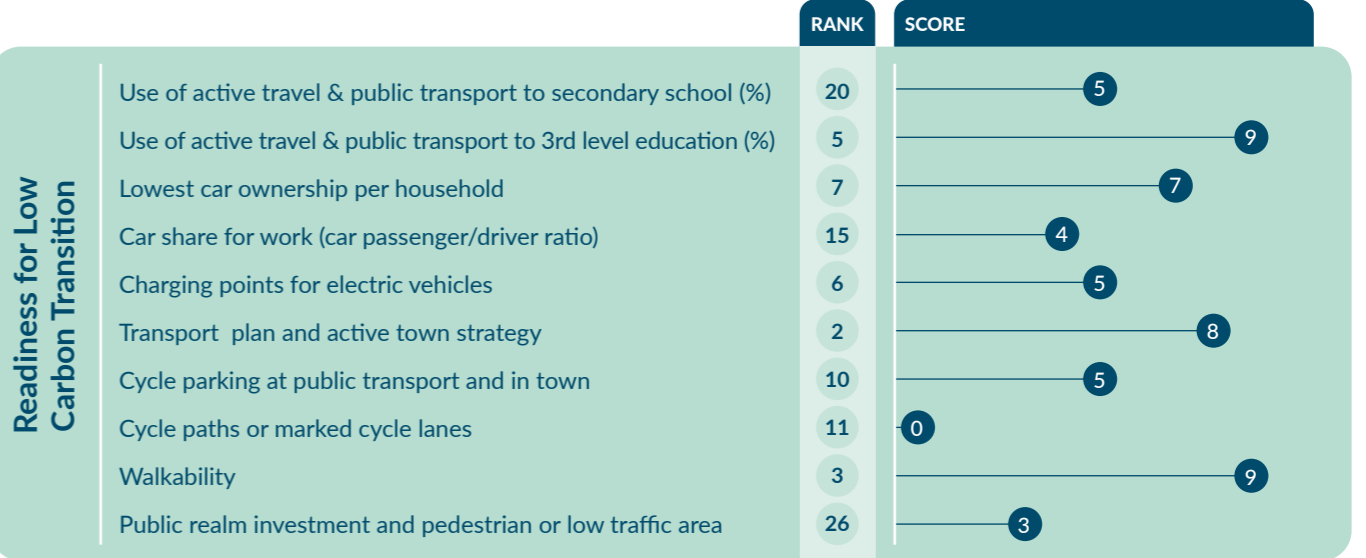
Median household gross income:
€26,299



WDC Mobility Index

Readiness for Low Carbon Transition	8	55
Access to Services and Social Facilities	33	24
Access to Employment and Economic Opportunities	35	33

RANK
34
SCORE
112



To learn more about the development of the WDC's SMI 2022 for Rural Towns, see our full report [here](#).