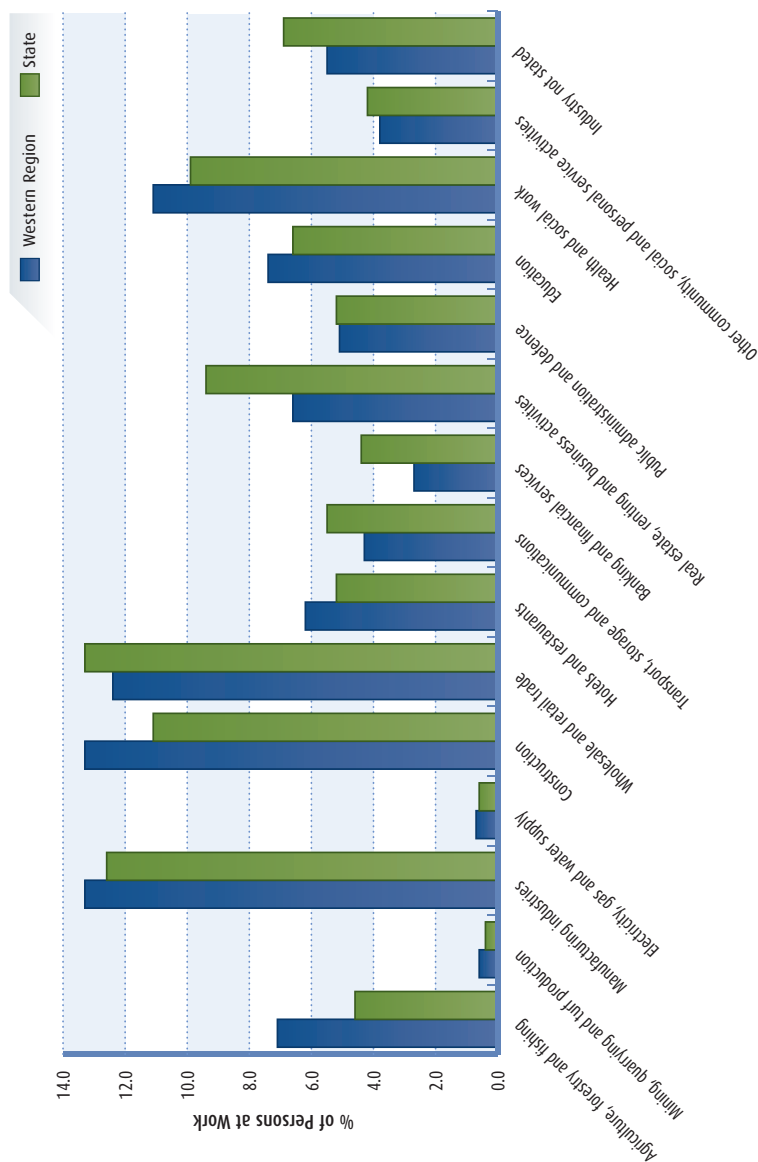


# Section 5

## Enterprise and Employment

- 5.1a Persons at work in the Western Region classified by broad industrial group, 2006
- 5.1b Persons at work in each county and the Western Region classified by broad industrial group, 2006
- 5.2a Males and females at work in the Western Region classified by broad industrial group, 2006
- 5.2b Males and females at work in each county and the Western Region classified by broad industrial group, 2006
- 5.3 Percentage of all enterprises in the state categorised by employee numbers, which were located in the Western Region, 2007
- 5.4a Employment in agency assisted firms in the Western Region, 1996, 2002, 2006
- 5.4b Employment in agency assisted firms by ownership in each county and in the Western Region, 1996, 2002, 2006
- 5.5a Net cumulative job creation in agency assisted firms in the Western Region, 1996-2006
- 5.5b Net cumulative job creation in agency assisted firms in each county and in the Western Region, 1996-2006
- 5.6a Employment in agency assisted firms in the knowledge sector in each county and in the Western Region and Dublin, 1996, 2002, 2006
- 5.6b Employment in agency assisted firms in the knowledge sector as a share of all agency assisted employment in each county and in the Western Region and Dublin, 1996, 2002, 2006
- 5.7 Direct research income by third level institutions in the state, 2005/6

## 5.1a Persons at work<sup>1</sup> in the Western Region classified by broad industrial group, 2006



<sup>1</sup> Persons aged 15 years and over. At work is defined as those whose present principal status is defined as working for payment or profit.

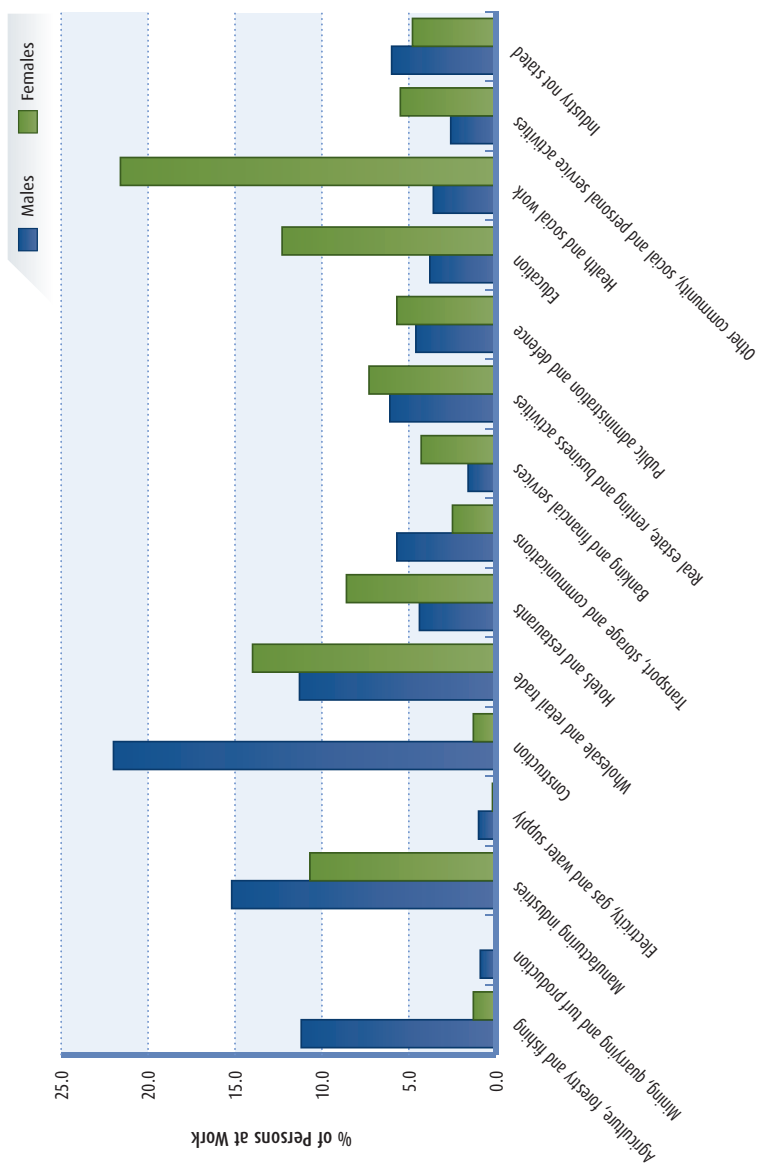
## 5.1b Persons at work<sup>1</sup> in each county and the Western Region classified by broad industrial group, 2006

	% in Each Industrial Group 2006															
County/ Region	Agriculture, forestry and fishing	Mining, quarrying and turf production	Manu- facturing industries	Electricity, gas and water supply	Constr- uction	Wholesale and retail trade	Hotels and restaurants	Transport, storage and commu- nications	Banking and financial services	Real estate, renting and business activities	Public admin- istration and defence	Education	Health and social work	Other community, social and personal service activities	Industry not stated	Total Persons
Clare	6.3	0.5	14.6	1.3	12.0	11.1	6.1	6.7	2.8	7.4	5.0	6.8	8.2	3.7	7.4	50,607
Galway	5.7	0.4	14.8	0.4	12.6	11.9	6.4	3.8	2.8	7.9	3.9	7.9	11.0	4.1	6.2	104,495
Leitrim	9.3	0.9	11.0	0.6	15.6	10.7	5.4	3.5	4.5	5.4	6.8	6.3	12.7	3.5	4.0	12,669
Mayo	9.1	0.6	12.8	0.6	14.9	13.5	6.5	3.8	2.0	5.3	4.8	6.6	10.9	3.5	5.1	52,277
Roscommon	10.1	1.4	11.7	0.8	14.3	13.0	4.1	4.6	3.1	5.2	7.0	6.4	11.0	3.4	3.8	25,829
Sligo	6.6	0.3	13.3	0.6	11.5	12.6	5.6	4.1	2.4	5.7	6.5	7.3	15.2	3.7	4.5	27,328
Donegal	6.7	0.4	11.0	0.6	14.3	13.6	6.8	3.8	2.7	5.8	5.5	8.2	12.0	3.9	4.6	56,670
Western Region	7.1	0.6	13.3	0.7	13.3	12.4	6.2	4.3	2.7	6.6	5.1	7.4	11.1	3.8	5.5	329,875
State	4.6	0.4	12.6	0.6	11.1	13.3	5.2	5.5	4.4	9.4	5.2	6.6	9.9	4.2	6.9	1,930,042

Source: CSO, Census of Population 2006, Volume 7, Table 13

<sup>1</sup> Persons aged 15 years and over. At work is defined as those whose present principal status is defined as working for payment or profit.

## 5.2a Males and females at work<sup>1</sup> in the Western Region classified by broad industrial group, 2006



<sup>1</sup> Persons aged 15 years and over. At work is defined as those whose present principal status is defined as working for payment or profit.

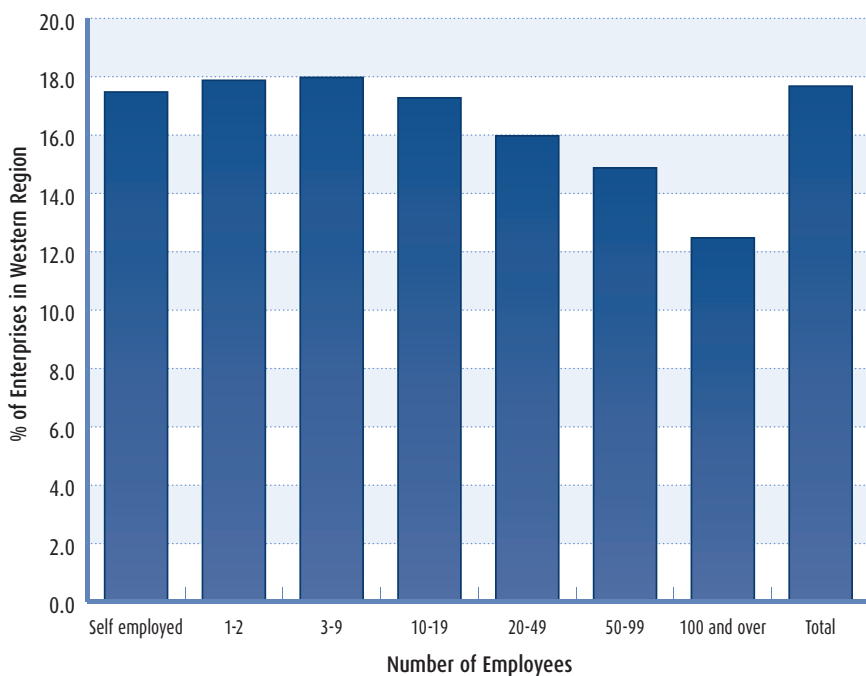
## 5.2b Males and females at work<sup>1</sup> in each county and the Western Region classified by broad industrial group, 2006

	% in Each Industrial Group 2006															
Region	Agriculture, forestry and fishing	Mining, quarrying and turf production	Manu- facturing industries	Electricity, gas and water supply	Constr- uction	Wholesale and retail trade	Hotels and restaurants	Transport, storage and commun- ications	Banking and financial services	Real estate, renting and business activities	Public admin- istration and defence	Education	Health and social work	Other community, social and personal service activities	Industry not stated	Total persons
WESTERN REGION																
Males	11.2	0.9	15.2	1.0	22.0	11.3	4.4	5.7	1.6	6.1	4.6	3.8	3.6	2.6	6.0	191,317
Females	1.3	0.1	10.7	0.2	1.3	14.0	8.6	2.5	4.3	7.3	5.7	12.3	21.6	5.5	4.8	138,558
Total	7.1	0.6	13.3	0.7	13.3	12.4	6.2	4.3	2.7	6.6	5.1	7.4	11.1	3.8	5.5	329,875
STATE																
Males	7.2	0.6	15.2	0.8	18.4	12.1	4.0	7.1	3.2	9.0	5.2	3.4	3.2	3.0	7.4	1,107,234
Females	1.1	0.1	9.0	0.3	1.4	15.0	6.8	3.3	6.0	9.8	5.4	10.9	18.9	5.7	6.2	822,808
Total	4.6	0.4	12.6	0.6	11.1	13.3	5.2	5.5	4.4	9.4	5.2	6.6	9.9	4.2	6.9	1,930,042

Source: CSO, Census of Population 2006, Volume 7, Table 13

.....  
<sup>1</sup> Persons aged 15 years and over. At work is defined as those whose present principal status is defined as working for payment or profit.

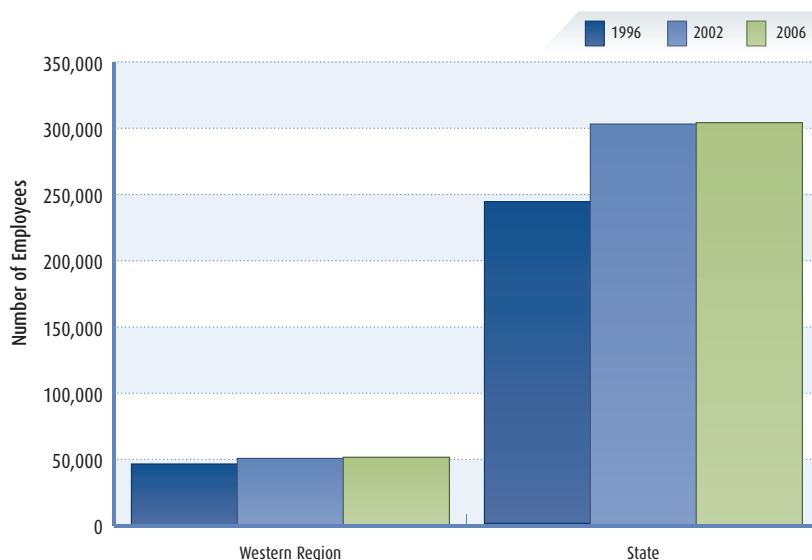
### 5.3 Percentage of all enterprises in the state categorised by employee numbers, which were located in the Western Region, 2007



	Number of Enterprises in Each Category 2007							
Number of Employees	Self employed	1-2	3-9	10-19	20-49	50-99	100 and over	Total
Region								
Western Region	9,110	14,399	9,849	2,336	1,267	336	243	37,540
State	51,930	80,329	54,744	13,474	7,914	2,253	1,939	212,583
% of Enterprises in the Western Region	17.5	17.9	18.0	17.3	16.0	14.9	12.5	17.7

Source: Revenue Commissioners, Employee Numbers in Irish Enterprises August 2007

## 5.4a Employment<sup>1</sup> in agency assisted firms in the Western Region, 1996, 2002, 2006



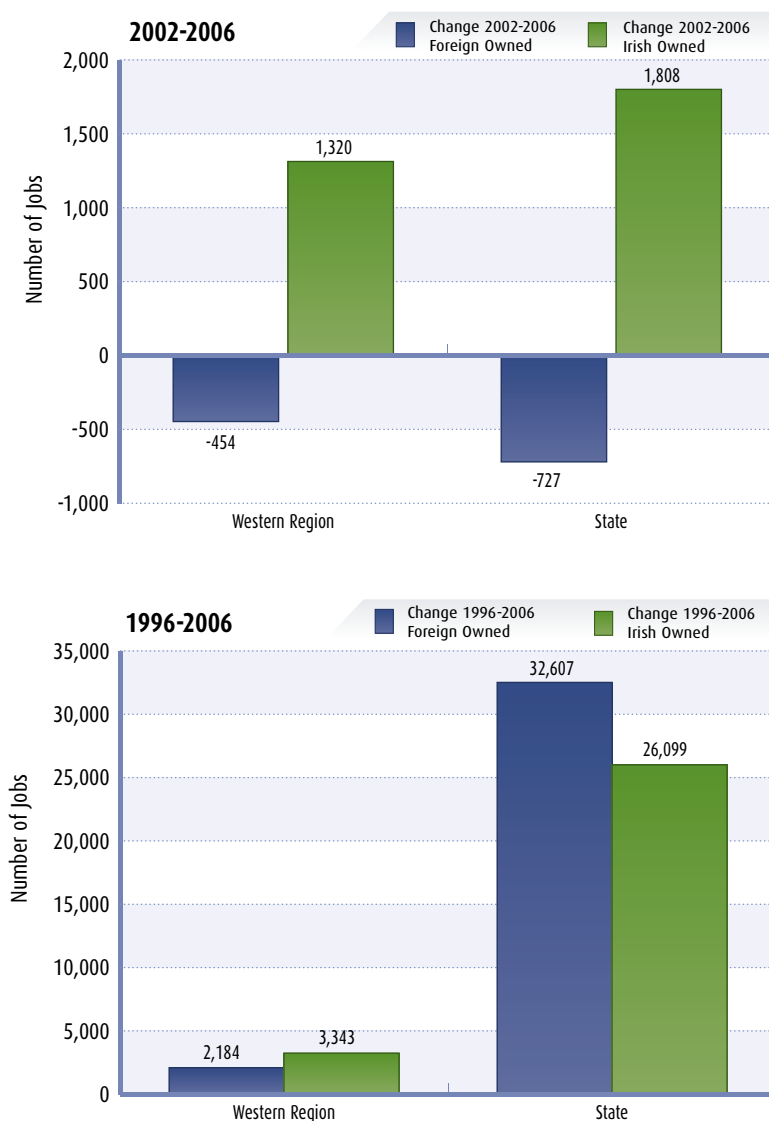
## 5.4b Employment<sup>1</sup> in agency assisted firms by ownership in each county and in the Western Region, 1996, 2002, 2006

	Number of Employees								
	All Ownership			Foreign			Irish		
County/Region	1996	2002	2006	1996	2002	2006	1996	2002	2006
Clare	8,761	10,134	9,970	6,303	7,643	7,466	2,458	2,491	2,504
Donegal	10,614	8,392	7,315	5,111	3,073	1,802	5,503	5,319	5,513
Leitrim	1,187	1,581	1,906	452	952	1,350	735	629	556
Sligo	3,897	4,250	4,244	2,331	2,649	2,539	1,566	1,601	1,705
Galway	13,489	17,320	19,350	7,178	9,137	10,671	6,311	8,183	8,679
Mayo	6,218	7,018	6,949	3,210	3,609	3,031	3,008	3,409	3,918
Roscommon	2,748	2,880	2,707	1,040	1,200	950	1,708	1,680	1,757
Western Region	46,914	51,575	52,441	25,625	28,263	27,809	21,289	23,312	24,632
State	246,356	303,981	305,062	120,745	154,079	153,352	125,611	149,902	151,710

Source: Forfás Annual Employment Survey 2006

<sup>1</sup> Employment refers to permanent full-time employment only. The Forfás Annual Employment Survey captures all those companies receiving agency assistance from IDA, Enterprise Ireland, Údarás na Gaeltachta and Shannon Development, and includes both manufacturing and services.

## 5.5a Net job creation<sup>1</sup> in agency assisted firms in Western Region, 1996-2006



<sup>1</sup> Employment refers to permanent full-time employment only. The Forfás Annual Employment Survey captures all those companies receiving agency assistance from IDA, Enterprise Ireland, Údarás na Gaeltachta and Shannon Development, and includes both manufacturing and services.



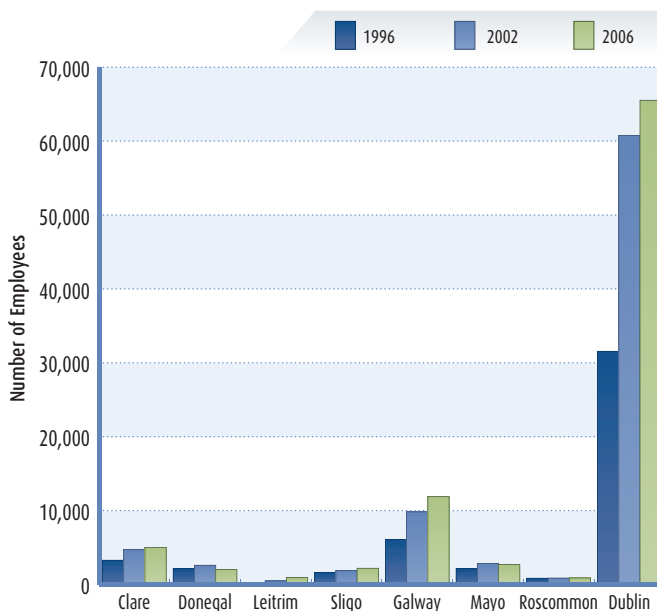
## 5.5b Net job creation in agency assisted firms in each county and in the Western Region, 1996-2006

County/Region	Net Job Creation			
	Change 2002-2006		Change 1996-2006	
	Foreign Owned	Irish Owned	Foreign Owned	Irish Owned
Clare	-177	13	1,163	46
Donegal	-1,271	194	-3,309	10
Leitrim	398	-73	898	-179
Sligo	-110	104	208	139
Galway	1,534	496	3,493	2,368
Mayo	-578	509	-179	910
Roscommon	-250	77	-90	49
<b>Western Region</b>	<b>-454</b>	<b>1,320</b>	<b>2,184</b>	<b>3,343</b>
<b>State</b>	<b>-727</b>	<b>1,808</b>	<b>32,607</b>	<b>26,099</b>

Source: Forfás Annual Employment Survey 2006

Note: There was an error in the titles of Chart 5.5a and Table 5.5b in the printed and original pdf versions of The Western Region: Key Statistics. The current pdf version was corrected in September 2008.

## 5.6a Employment<sup>1</sup> in agency assisted firms in the knowledge sector<sup>2</sup> in each county and in the Western Region and Dublin, 1996, 2002, 2006



	Number Employed in Knowledge Sectors		
	All Ownership		
County/Region	1996	2002	2006
Clare	3,312	4,772	5,039
Donegal	2,182	2,634	2,070
Leitrim	21	520	962
Sligo	1,664	1,926	2,226
Galway	6,139	9,861	11,918
Mayo	2,175	2,878	2,744
Roscommon	874	903	924
Western Region	16,367	23,494	25,883
State	89,526	144,668	157,886
Dublin	31,587	60,803	65,560

Source: Forfás Annual Employment Survey 2006

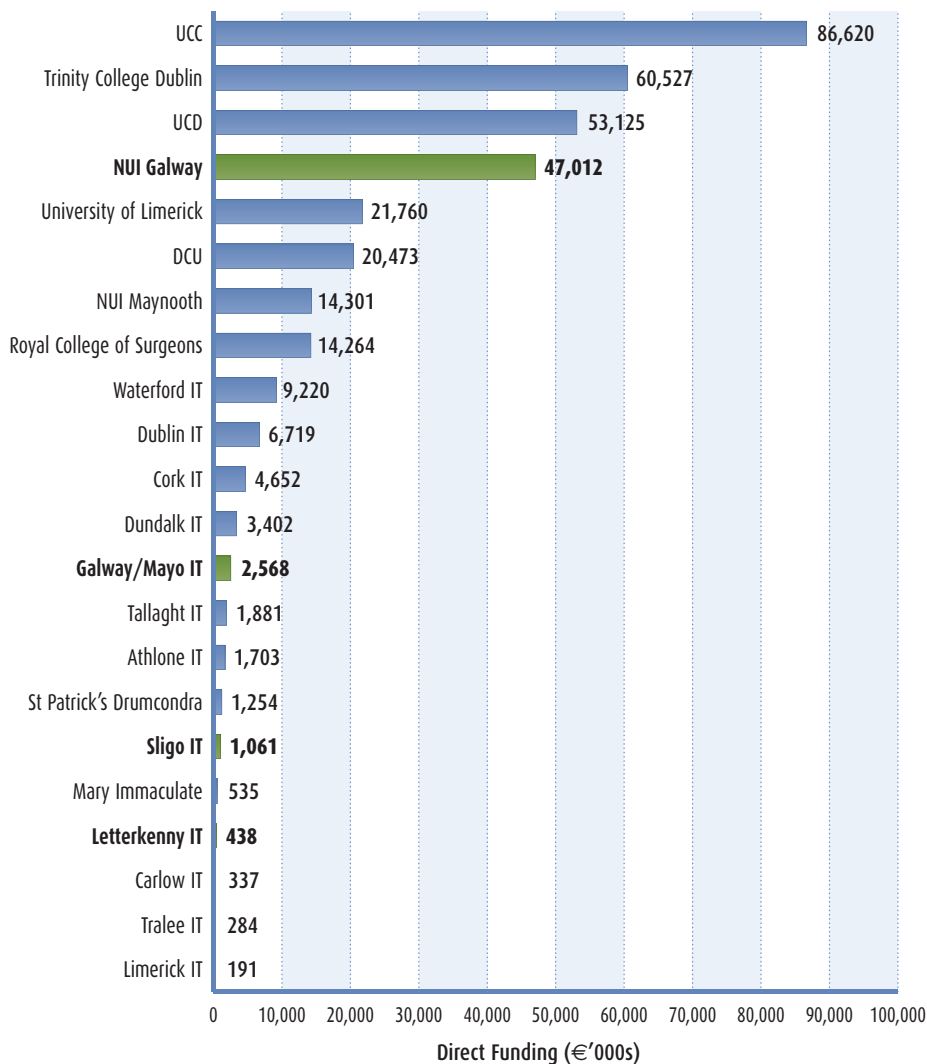
- 1 Employment refers to permanent full-time employment only. The Forfás Annual Employment Survey captures all those companies receiving agency assistance from IDA, Enterprise Ireland, Údarás na Gaeltachta and Shannon Development, and includes both manufacturing and services.
- 2 The knowledge sector is defined as the subset of firms that comprises the following sub-sectors: chemicals; electrical & optical; financial & international services.

## 5.6b Employment in agency assisted firms in the knowledge sector as a share of all agency assisted employment in each county and in the Western Region and Dublin, 1996, 2002, 2006

	Employment in Knowledge Sectors as a % of All Employment		
County/Region	1996	2002	2006
Clare	37.8	47.1	50.5
Donegal	20.6	31.4	28.3
Leitrim	1.8	32.9	50.5
Sligo	42.7	45.3	52.5
Galway	45.5	56.9	61.6
Mayo	35.0	41.0	39.5
Roscommon	31.8	31.4	34.1
Western Region	34.9	45.6	49.4
State	36.3	47.6	51.8
Dublin	46.7	61.8	68.7

Source: Forfás Annual Employment Survey 2006

## 5.7 Direct research income<sup>1</sup> by third level institutions in the state, 2005/6



Source: Forfás, Higher Education R&D Survey 2006: First Findings

<sup>1</sup> Spending on R&D in the higher education sector in Ireland was €600 million in 2006. Direct research income to the Irish higher education sector amounted to €352 million. It includes funding from the Irish Exchequer, EU sources, individuals and businesses. It excludes indirect funding totalling €248 million from the Higher Education Authority block grant.