



Delivering Spatial Development

Mark Griffin

***Assistant Secretary
Heritage and Planning Division***

***Department of the Environment, Heritage and
Local Government***

23 May 2008

NSS High Level Objectives

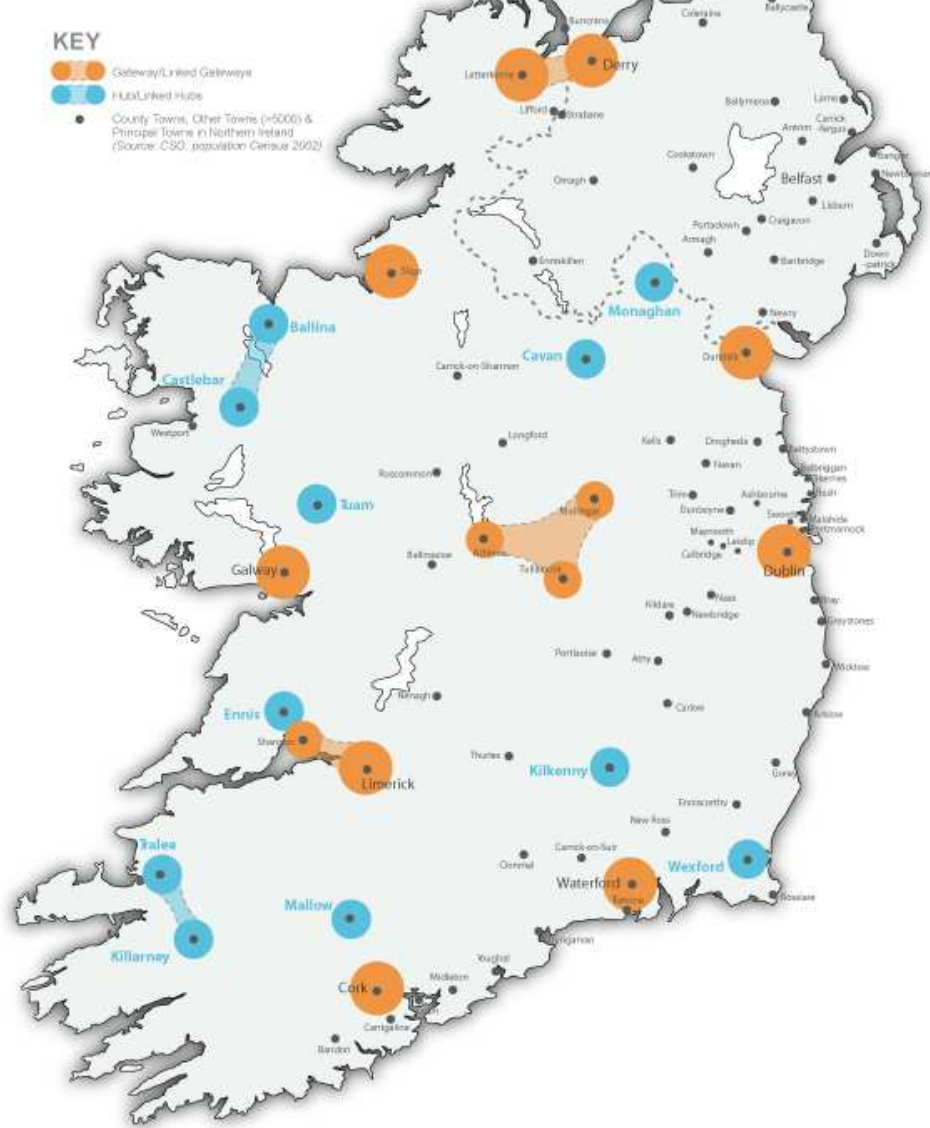
- ***Better spread of job opportunities ...***
- ***Better quality of life ...***
- ***Better places to live in ...***
- ***How?***
 - ***Strong Gateways = strong regions***
 - ***Strengthening regions through structured prioritised investment...***
 - ***Putting strategies in place for the Gateways...***
 - ***Better co-ordination ...and better local planning...***

Achievements so far

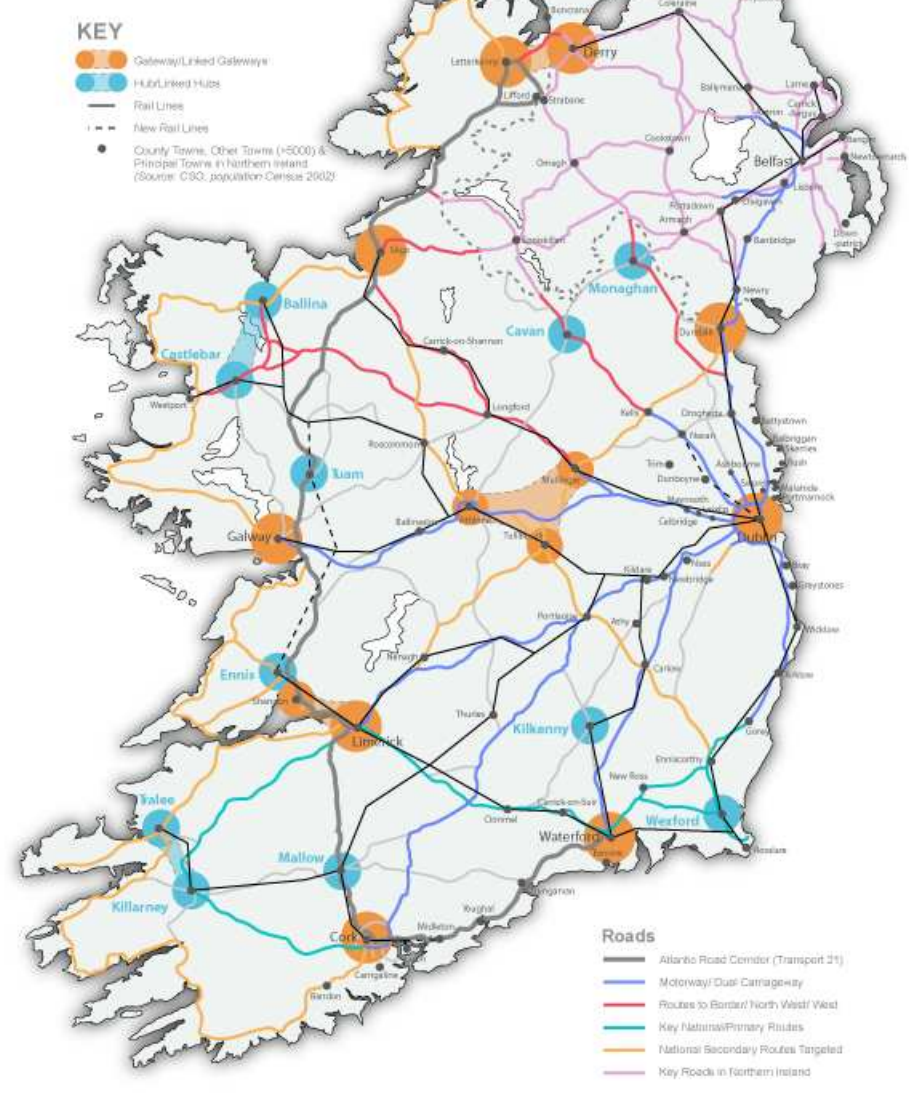
- ***NDP and other programme alignments realising DEHLG/Forfás gateway priorities***
- ***RPGs and planning hierarchy - consistency***
- ***LUTS adopted in gateways – thinking strategically***
- ***Atlantic Gateway collaboration***
- ***All-island strategic planning***
- ***Policy developments***
 - ***Building Homes, Sustaining Communities***
 - ***Guidelines - development plans; sustainable residential development; rural housing.***

FIGURE 3- Infrastructure Plans: Current, Committed & Indicative Roads to 2014

**NATIONAL SPATIAL STRATEGY (NSS)
Gateways and Hubs**



Road and Rail Network



Considerable challenges remain

- **Are strategies being delivered, and having good effect?**
 - **Some better than others? Why?**
- **Is investment going to the right places?**
 - **NDP prioritisation; GIF**
- **Have we the tools to deliver?**
 - **Gateway/hub implementation teams**
 - **Consistency in planning hierarchy**
- **Have we an accurate picture of trends?**
 - **Forfás/DEHLG gateway reports and hubs study**
 - **NDP/NSS monitoring – expenditure, impacts and trends**

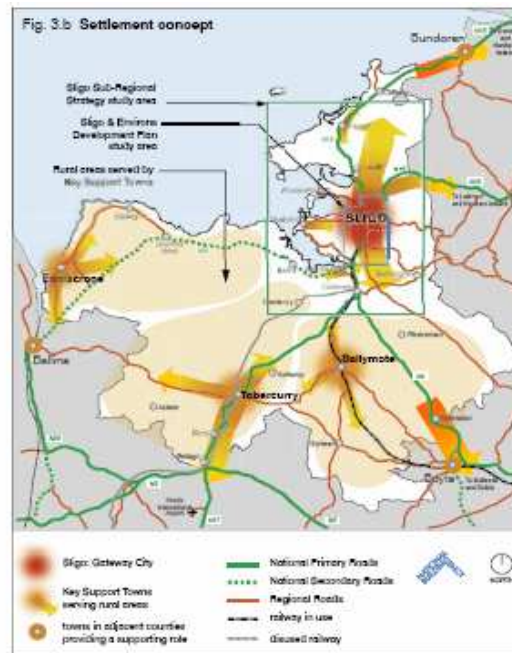
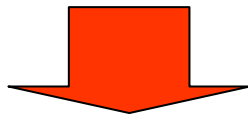
Consistency in Plans

- ***The ultimate test of NSS is whether principles and results are delivering on the ground.***
- ***The Development Plan – the policy context for planning at local level...***
- ***Plans need to have:***
 - ***clear vision – realistic ambition – good linkages – strong on implementation***
- ***New guidelines on development plans and sustainable residential development.***
- ***Further interventions sometimes necessary.***



Many getting strategic context right ... *Sligo County Plan*

- *Hierarchy feeding into zonings and investment decisions*
- *Long-term vision for growth/consolidation*



Sligo - Gateway City	
37,000-42,000	
Key Support Towns	
Ballymote	2,500-4,000
Tobercurry	2,500-4,000
Enniscrone	2,000-2,500
Key Satellite Villages	
Collooney	2,500-3,000
Ballysadare	2,000-2,500
Strandhill	2,000-2,500
Grange	1,000-1,500
Rosses Point	1,000-1,500
Settlements with special functions	
Easky	c. 500
Mullaghmore	c. 500
Other settlements along the Western Rail Corridor	
Coolaney	300-500
Bellaghy	200-300
Other settlements in the Sub-Region	
Rathoormoak	300-400
Ballintogher	200-300
Ballygawley	200-300
Carney	200-300
Drumoliff	200-300
Calry	150-200
Ransboro	150-200
Other settlements in the County including rural areas	
up to 10,000	

24

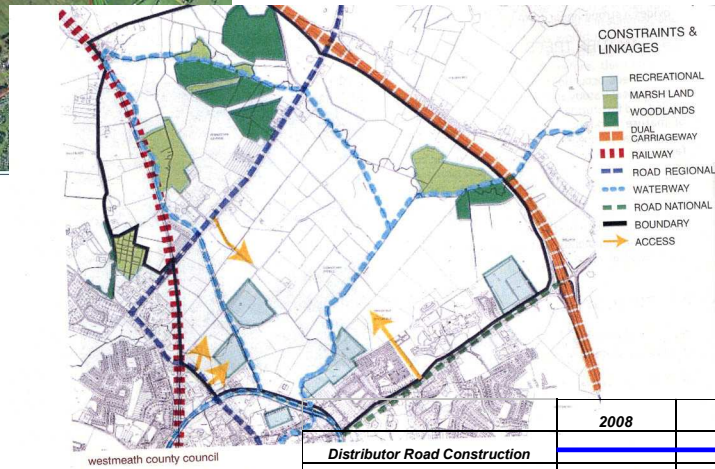
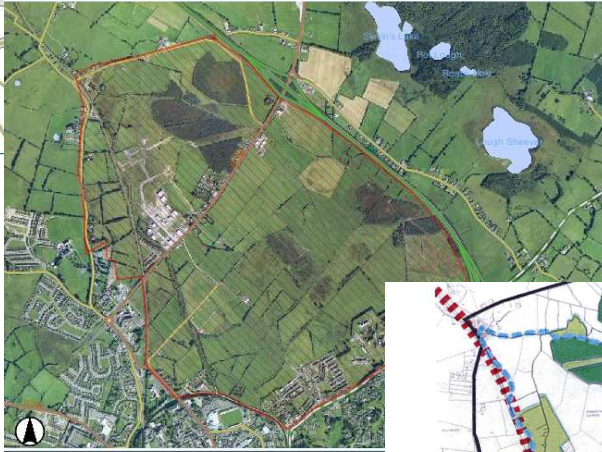
Gateway Innovation Fund

- ***Additional to significant Exchequer investment in gateways***
- ***€300m GIF for 2008-2010...***
 - ***Targeted, added value intervention to stimulate joined-up planning for/delivery of accelerated development in gateways***
 - ***proposals received from all 9 gateways and evaluation ongoing***
- ***Qualifying expenditure: integrated regeneration, green transport initiatives, measures to release strategic blocks of land, quality of life investments***
- ***Initiative strengthens implementation mechanisms available for Gateway strategies***

Developing Areas Initiative

- ***Responsibility for “developing areas” assigned to Minister of State for Housing and Urban Renewal***
- ***Link between NSS/RPGs and “Building Homes, Sustaining Communities”***
- ***35 strategic, fast growing areas in gateways and hubs identified***
- ***Process, outcomes and actions***

Concept to Reality...



	2008	2009	2010	2011	2012
Distributor Road Construction	[Blue bar spanning 2008-2010]				
Interceptor Foul Sewage		[Blue bar spanning 2009-2011]			
Sewage Plant Upgrade	[Blue bar spanning 2008-2012]				
Surface Water Works			[Blue bar spanning 2010-2012]		
Water Supply Upgrade			[Blue bar spanning 2010-2012]		
Intergrated Sports Complex		[Blue bar spanning 2009-2011]			
1st Phase Residential Childcare/Retail		[Blue bar spanning 2009-2011]			
2nd Phase Dwelling/Retail			[Blue bar spanning 2011-2012]		
1st Phase Employment		[Blue bar spanning 2009-2011]			
School/Healthcare Provision				10	[Blue bar in 2012]

Key assessments and actions needed

Item (Responsibility)	2008	2009	2010	2011	2012
<i>Distributor Road Construction</i>	Committed	Committed			
<i>Interceptor Foul Sewage</i>		Committed	Committed		
<i>Sewage Plant Upgrade</i>	Committed	Committed			
<i>Surface Water Works</i>			Committed	Committed	
<i>Water Supply Upgrade</i>			Pending (details?)	Pending (details?)	
<i>Intergrated Sports Complex</i>		Pending (details?)	Pending (details?)		
<i>1st Phase Residential Childcare/Retail</i>		Committed	Pending (details?)		
<i>2nd Phase Dwelling/Retail</i>				Committed	Pending (details?)
<i>1st Phase Employment</i>		Pending (details?)	Pending (details?)		
<i>School/Healthcare Provision</i>					Pending (details?)

Committed

Pending (details?)

Not committed (why?)

Atlantic Gateways

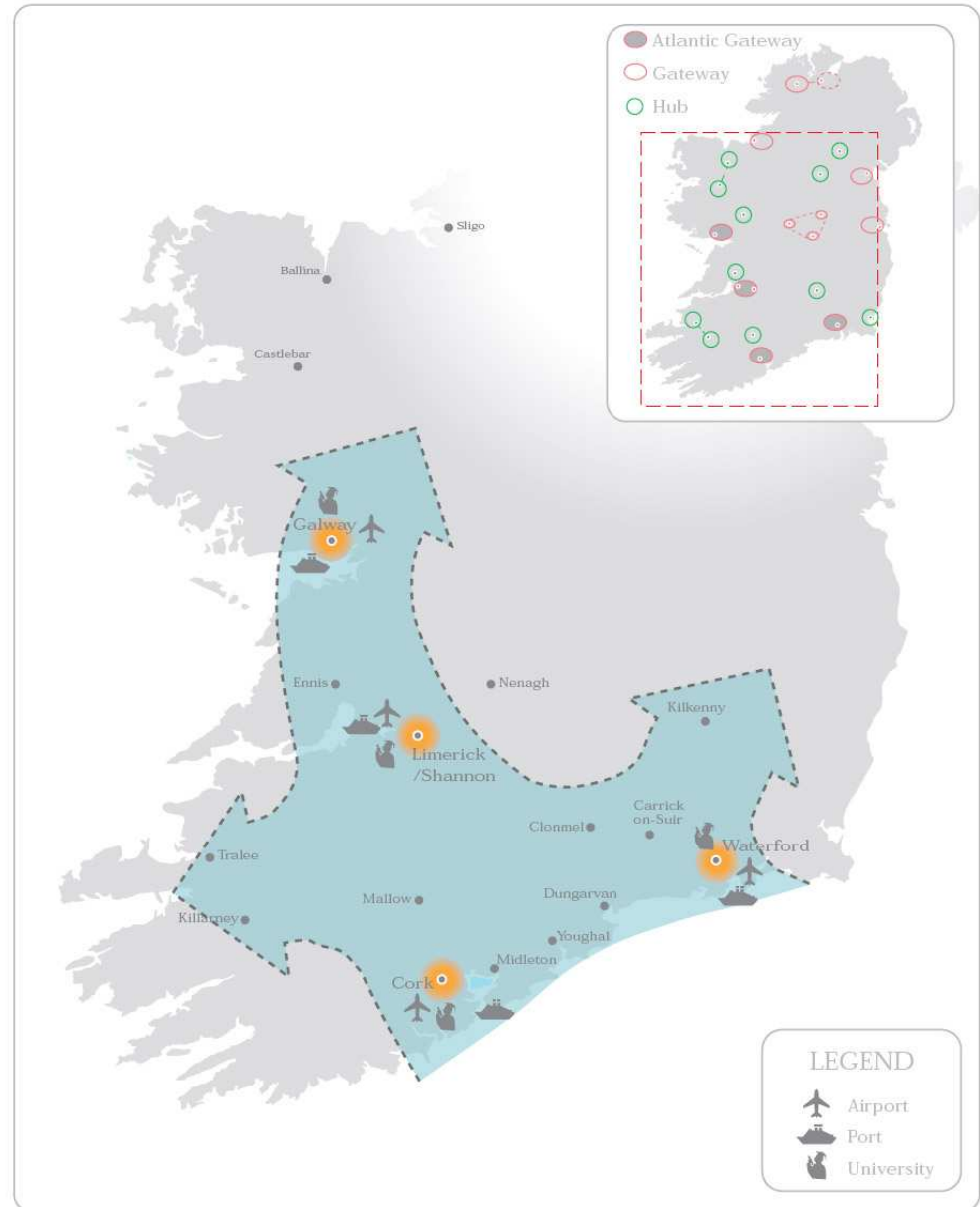
Phase 1 - implementing existing plans at Gateway level

Phase 2 - looking at areas between Gateways

- **Planned public transport oriented growth**
- **Economic development**
- **Infrastructure**
- **Rural Development**

Phase 3 - Creating another strong metropolitan corridor...

FIGURE 9 - Atlantic Gateways: Phase III
Ireland's Second Metropolitan Corridor.



Some priorities for 2008

- ***GIF projects approved and up and running***
- ***Progress Developing Areas Initiative***
 - ***Baseline assessments and GIS database***
 - ***Address critical blockages to delivery***
- ***Publish and integrate Atlantic Gateway corridor frameworks into development plans etc.***
- ***Planning consistency and delivery***
- ***Effective NSS/NDP regional development monitoring template***
- ***Continue to work effectively with LAs***



Delivering Spatial Development

Mark Griffin

***Assistant Secretary
Heritage and Planning Division***

***Department of the Environment, Heritage and
Local Government***

23 May 2008