

Preliminary Results of Census 2016: Roscommon

Roscommon LCDC
8 December 2016

Pauline White, Policy Analyst
paulinewhite@wdc.ie 094 986 1441

Follow our Blog
wdcinsights.wordpress.com/

@WDCinsights



Western Development Commission



- 7-county Western Region
- State body under the Department of Arts, Heritage, Regional, Rural & Gaeltacht Affairs
- WDC Act 1998

'... foster and promote the economic and social development of the Western Region'



Western Development Commission

1. Inform **policy**-making through **analysis** of region's issues & needs (e.g. labour market, infrastructure)
2. Promote living, working & doing business in Western Region – **LookWest.ie**
3. Support sustainable **development** based on region's resources (e.g. renewable energy, creative industries)
4. Provide risk capital to SMEs & social enterprises through **WDC Investment Fund**

Follow our Blog
wdcinsights.wordpress.com/

@WDCInsights



Policy Analysis

- **Socio Economic Analysis**
 - Analysis of a range of indicators for the Western Region – Demography, Rural, Labour Market, eWork, Enterprise, Income, Output, Sectoral, Regional
- **Infrastructure**
 - Broadband
 - Transport: Rail, aviation, road
 - Energy: Electricity, Natural Gas, Renewables
- **Submissions** & engaging with policy making process
- **Reports, WDC Policy Briefings, WDC Insights**

WDC Insights Blog <https://wdcinsights.wordpress.com/>

Twitter @WDCInsights

Follow our Blog
wdcinsights.wordpress.com/

@WDCInsights





Follow our Blog
wdcinsights.wordpress.com/

@WDCInsights

WDC Insights
 providing insights on key issues for
 the Western Region of Ireland

Preliminary Census Results

- Initial results based on enumerator forms, subject to revision <http://www.cso.ie/en/census/>
- Only cover a small number of indicators (population by ED, migration & housing)
- No data on towns
- Full results by theme: April-Dec 2017
- **Small Area Population Statistics (SAPs)** due 20 July 2017

http://www.cso.ie/en/media/csoie/census/census2016/census2016pressreleases/Census_2016_Publication_Schedule.pdf

Follow our Blog
wdcinsights.wordpress.com/

@WDCInsights

WDC Insights
 providing insights on key issues for
 the Western Region of Ireland

Population change

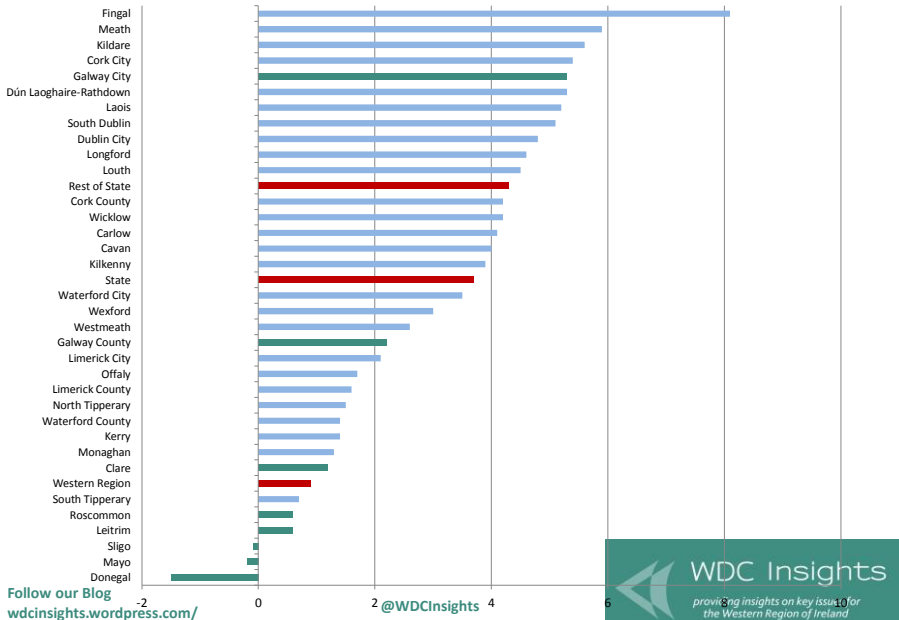
- Population April 2016 & % change 2011-2016
 - State: 4,757,976 (+3.7%)
 - Western Region: 828,124 (+0.9%)
 - **Roscommon: 64,436 (+0.6%)**

Follow our Blog
wdcinsights.wordpress.com/

@WDCInsights



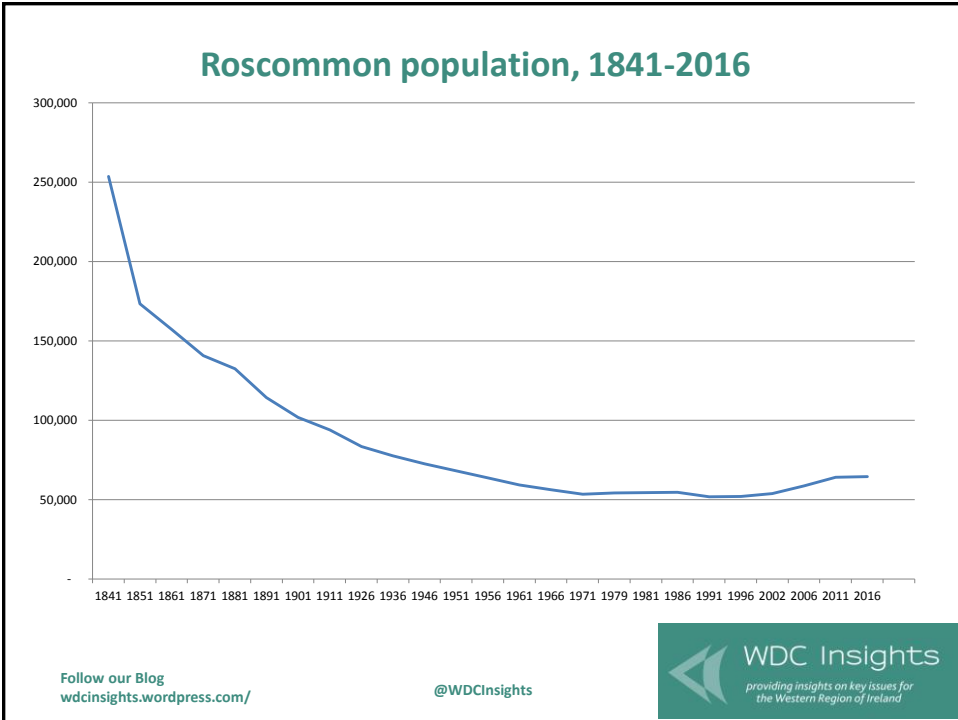
Percentage change in population 2011-2016



Follow our Blog
wdcinsights.wordpress.com/

@WDCInsights





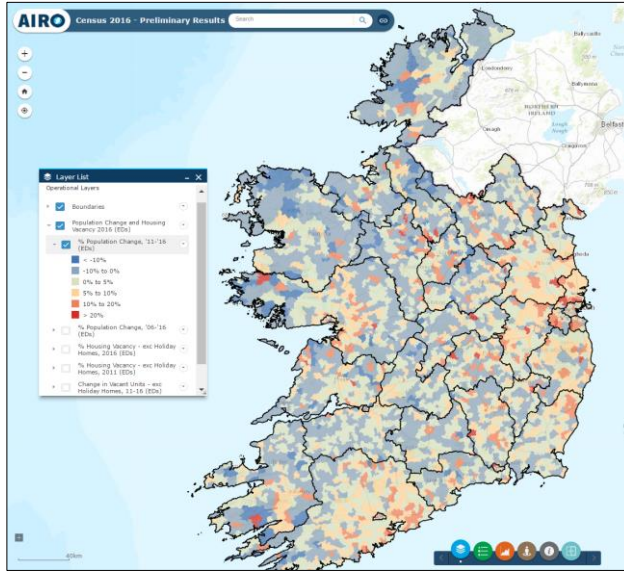
4 Rural Districts in Roscommon

Rural Districts	2016	% change 2011-2016
Athlone No. 2 rural area	16,547	3.5
Boyle No. 1 rural area	10,271	0.3
Castlereagh rural area	15,043	-3.2
Roscommon rural area	22,575	1.3

Follow our Blog wdcinsights.wordpress.com/ @WDCInsights

WDC Insights
providing insights on key issues for the Western Region of Ireland

Percentage change in the population of Electoral Divisions, 2006-2011



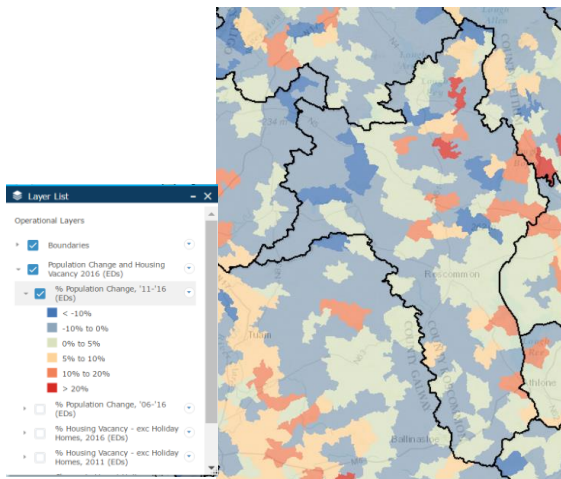
Follow our Blog
wdcinsights.wordpress.com/

@WDCInsights

WDC Insights
providing insights on key issues for
the Western Region of Ireland

Change by ED in Co Roscommon

<http://airomaps.nuim.ie/id/Census2016/>



Follow our Blog
wdcinsights.wordpress.com/

@WDCInsights

WDC Insights
providing insights on key issues for
the Western Region of Ireland

112 Electoral Divisions in Roscommon

Electoral Divisions	Change 2011-2016
50 had population growth	10 by >10%
	9 by 5%-10%
2 no change	
60 had population decline	9 by >10%
	19 by 5%- 10%

Follow our Blog
wdcinsights.wordpress.com/

@WDCInsights



Top 5 EDs with highest % increase	Population 2011 (Number)	Population 2016 (Number)	Actual change 2011-2016 (Number)	Percentage change 2011-2016 (%)
049 Oakport, Co. Roscommon	319	414	95	29.8
041 Kilcolagh, Co. Roscommon	126	148	22	17.5
063 Carrowduff, Co. Roscommon	203	236	33	16.3
078 Bumlin, Co. Roscommon	408	472	64	15.7
112 Tulsk, Co. Roscommon	279	315	36	12.9

Top 5 EDs with highest % decrease	Population 2011 (Number)	Population 2016 (Number)	Actual change 2011-2016 (Number)	Percentage change 2011-2016 (%)
051 Rushfield, Co. Roscommon	425	371	-54	-12.7
070 Fairymount, Co. Roscommon	359	313	-46	-12.8
080 Cloonfinlough, Co. Roscommon	201	173	-28	-13.9
025 Altagowlan, Co. Roscommon	57	49	-8	-14
077 Ballygarden, Co. Roscommon	220	176	-44	-20

Follow our Blog
wdcinsights.wordpress.com/

@WDCInsights



Components of Population Change

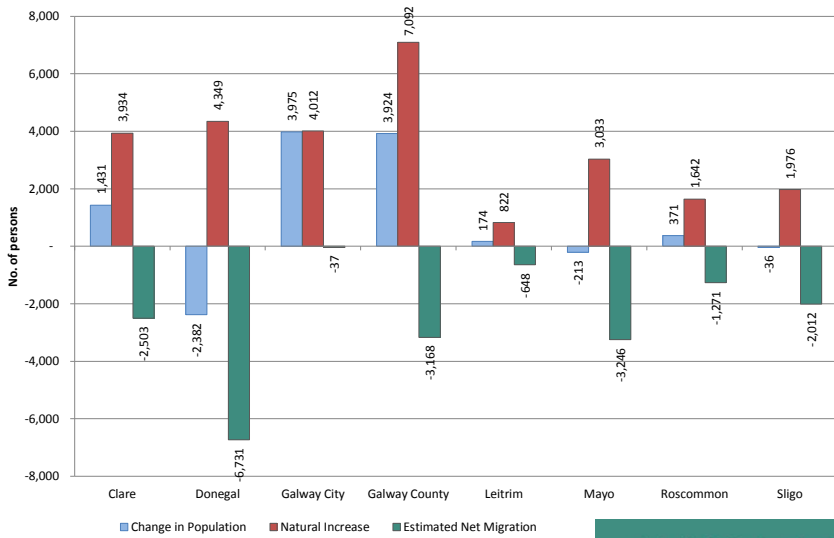
- Population change caused by
 - **Natural Increase** (difference between births & deaths)
 - **Net Migration** (difference between number moving into & out of county)
- **Roscommon 2011-2016**
 - Natural increase (+1,642) – Est net migration (-1,271) = Actual change (+371)

Follow our Blog
wdcinsights.wordpress.com/

@WDCInsights



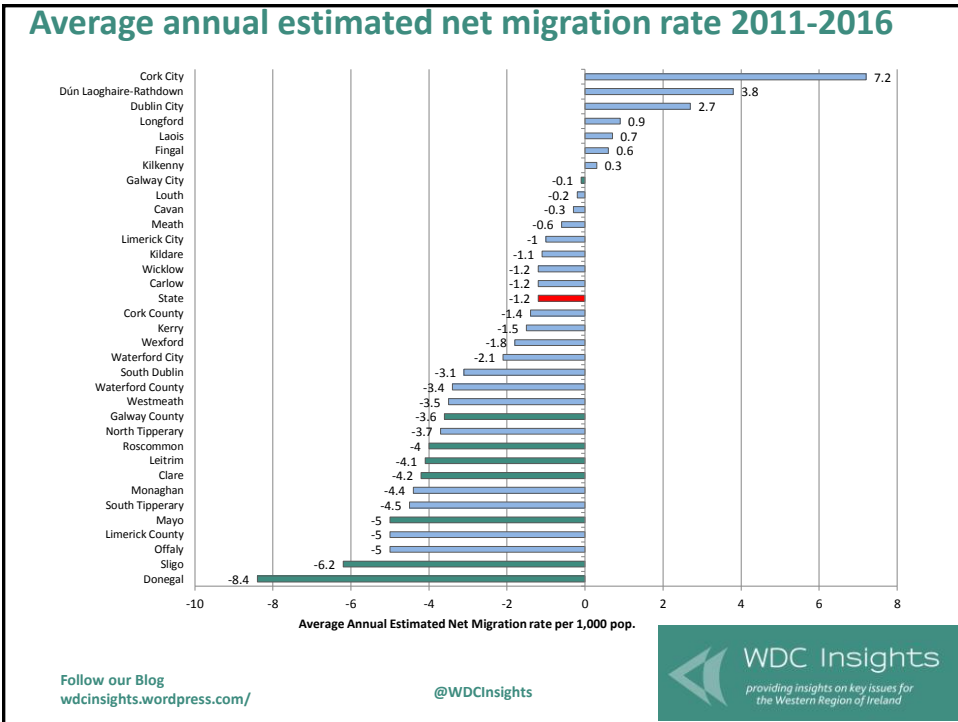
Components of population change in western counties, 2011-2016



Follow our Blog
wdcinsights.wordpress.com/

@WDCInsights





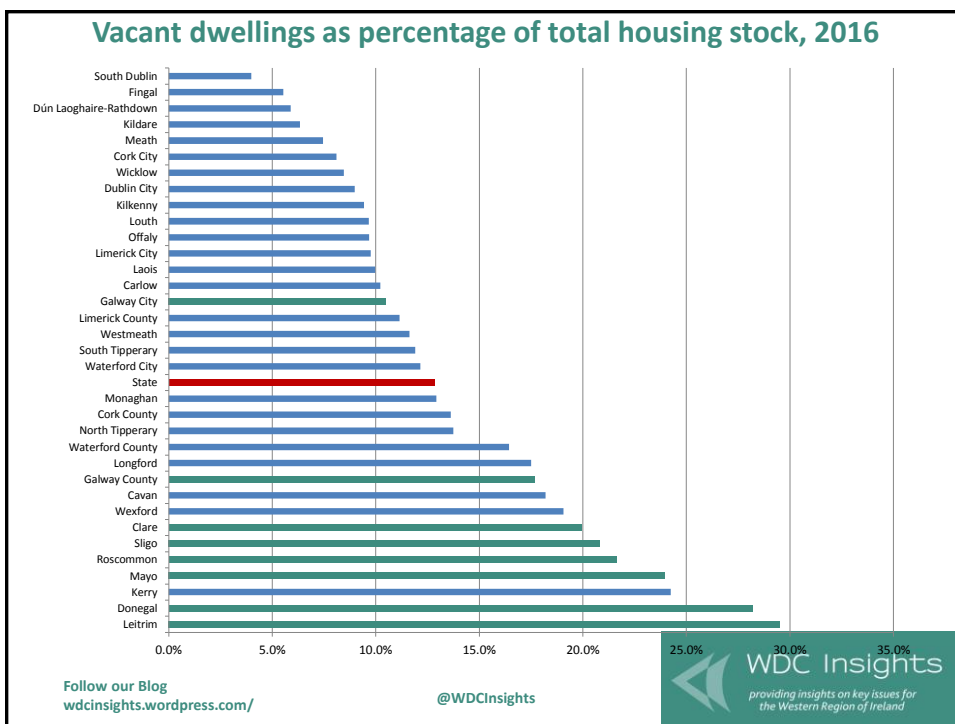
Housing

- Housing stock 2016 & % change 2011-2016
 - State: 1,769,613 (+0.9%)
 - Western Region: 404,494 (+0.8%)
 - **Roscommon: 31,534 (-0.5%)**
- Considering decade 2006-2016, Roscommon’s Housing stock increased +16.9%
- Vacancy rate 2016
 - State 12.4 (14.4 in 2011)
 - Western Region 21.7 (22.7 in 2011)
 - **Roscommon 21.6** (23.1 in 2011)

Follow our Blog
wdcinsights.wordpress.com/

@WDCInsights

WDC Insights
providing insights on key issues for
the Western Region of Ireland



Conclusion

- For Western Region, decline in population in 3 counties, only counties in Ireland to decline
- Roscommon & Leitrim lowest growth nationally
- More than half of the EDs in Roscommon had population decline
- Out migration a significant issue
- WDC Policy Analysis team will analyse comprehensive Census results as they become available during 2017

Follow our Blog
wdcinsights.wordpress.com/

@WDCInsights

WDC Insights
providing insights on key issues for the Western Region of Ireland

The headline figures

	Population 2011	Population 2016	Actual Change (2011-2016) (No.)	Percentage Change (2011-2016) (%)
Clare	117,196	118,627	1,431	1.2%
Donegal	161,137	158,755	-2,382	-1.5%
Galway City	75,529	79,504	3,975	5.3%
Galway County	175,124	179,048	3,924	2.2%
Leitrim	31,798	31,972	174	0.6%
Mayo	130,638	130,425	-213	-0.2%
Roscommon	64,065	64,436	371	0.6%
Sligo	65,393	65,357	-36	-0.1%
Western Region	820,880	828,124	7,244	0.9%
State	4,588,252	4,757,976	169,724	3.7%
Rest of State	3,767,372	3,929,852	162,480	4.3%

Follow our Blog
wdcinsights.wordpress.com/

@WDCInsights

