



What Job Opportunities are there after Education & Training?

Roscommon Education & Training Fair, 24 Oct 2012

Pauline White, Policy Analyst,
Western Development Commission



Outline of Presentation

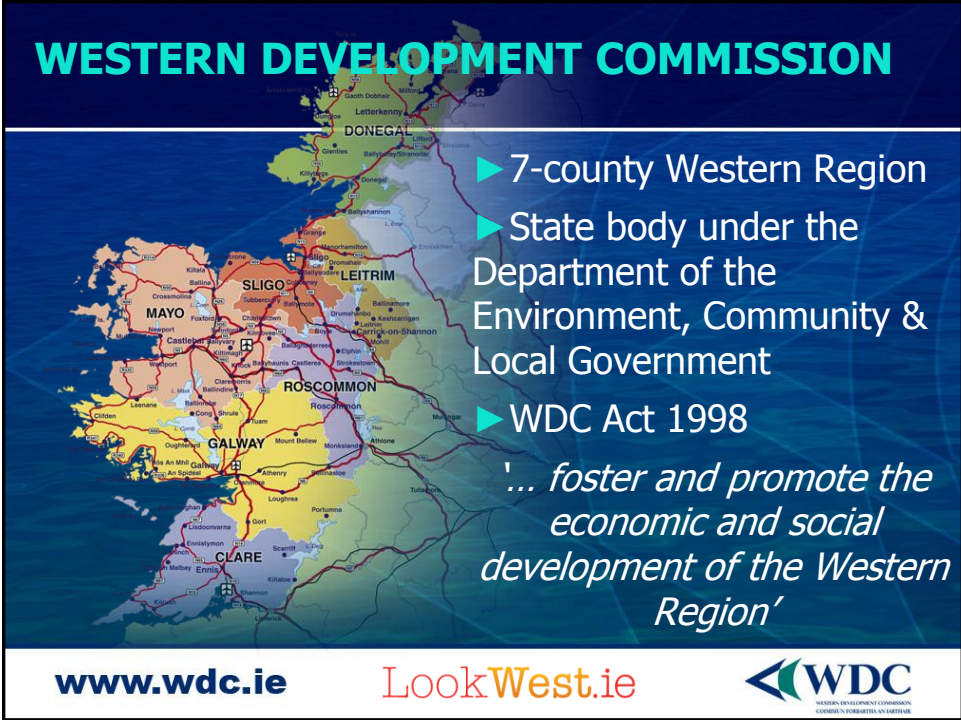
- ▶ WDC & Lookwest.ie
- ▶ Employment & Unemployment in Co Roscommon
- ▶ Employment Profiles of 16 towns & villages
- ▶ National Skills Shortages
- ▶ Western Region Growth Sectors

www.wdc.ie

LookWest.ie



WESTERN DEVELOPMENT COMMISSION



- ▶ 7-county Western Region
- ▶ State body under the Department of the Environment, Community & Local Government
- ▶ WDC Act 1998

'... foster and promote the economic and social development of the Western Region'

www.wdc.ie

LookWest.ie



LookWest.ie

the definitive guide to living, working and doing business in the Western Region

Gaeilge »

Follow Us »

Search...

Home
West Living
West Enterprise
Case Studies
Counties
Jobs & Property Search
Skills Register
News

West Living
We've got a lower cost of living, affordable property prices and great career options...

West Enterprise
A flexible and highly skilled local workforce with strong business links to 3rd level institutions...

Select a County

- Donegal
- Sligo
- Leitrim
- Mayo
- Roscommon
- Galway
- Clare

Watch Case Studies See all Case Studies »

Jobs & Property Search

[Click Here](#) for Jobs and Homes in the West.

Register Your Skills

[Help Us](#) attract employment to the region

Company Directory

[Click Here](#) to search for Companies

Newsletter Signup

Signup for our monthly newsletter

Enter your email address:

Upcoming Events more »

03 Nov : Gaelforce Turf Guy - November 3rd 2012 (Galway)

About LookWest

LookWest.ie is an initiative of the Western Development Commission:
[more »](#)

Winner : IIA Net Visionary Awards 2010 e-Government Award

Latest News more »

Junior Chamber National Convention comes to Mayo!
Junior Chamber International (JCI) Ireland is preparing for this year's... [more »](#)

Latest Tweets from LOOKWESTie

Twitter seems to be unavailable at the moment

Employment & Unemployment in Co Roscommon 2011

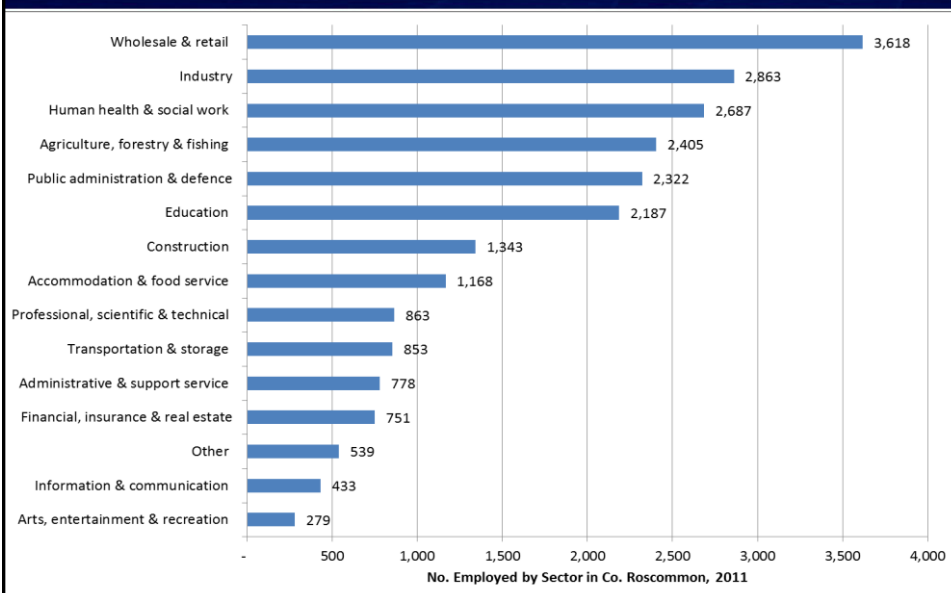
- ▶ Employment (Census 2011)
 - ▶ 24,390 people at work
 - ▶ 5,232 are self-employed (21.5% of total v 16.9% in State) – High share self-employed
 - ▶ 4,866 students (15 years or over)
- ▶ Unemployment (Census 2011)
 - ▶ 5,856 people unemployed
 - ▶ 19.4% Unemployment Rate (19% in State)

www.wdc.ie

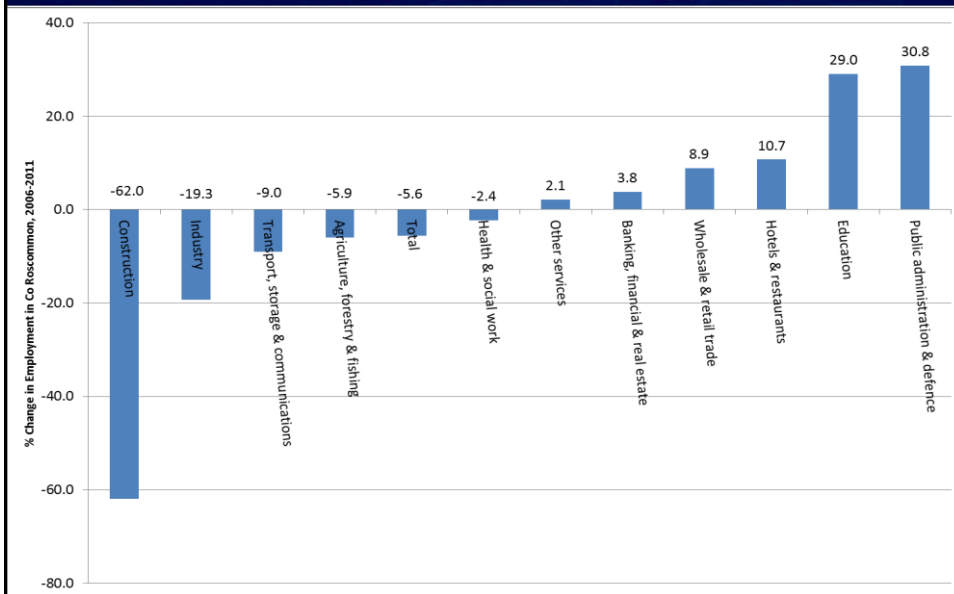
LookWest.ie



Employment by Sector in Co Roscommon, 2011



% Change in Employment in Co Roscommon, 2006-2011



Employment in Exporting Companies in Co Roscommon

- ▶ **1,788 employed in exporting companies** in Co Roscommon (2010)
 1. Modern Manufacturing – 889
 2. Food – 497
 3. Traditional Manufacturing – 348
 4. Services – 54
- ▶ Large job losses in traditional manufacturing & food, but modern manufacturing performed better

www.wdc.ie

LookWest.ie



Profile of 16 Towns & Villages in Co Roscommon

- ▶ Each profile has data on:
 - ▶ Age Profile
 - ▶ Economic Status
 - ▶ Employment by Sector
 - ▶ Highest Level of Education
 - ▶ Occupational Group

www.wdc.ie

LookWest.ie



% of total employment in each sector in 16 towns and villages in Roscommon, 2011

	Agri, forestry & fishing	Construction	Manufacturing	Commerce & trade	Transport & communications	Public administration	Professional services	Other
	%	%	%	%	%	%	%	%
Roscommon	2.2	4.6	11.5	24.8	3.7	11.3	23.5	18.4
Monksland/Bellanamulla*	1.5	2.8	17.7	25.4	8.3	10.2	19.5	14.6
Boyle	2.2	4.5	9.9	26.1	6.4	9.0	26.1	15.7
Castlerea	3.3	2.8	12.1	25.0	4.8	7.0	24.0	21.1
Ballaghaderreen	3.0	8.7	14.8	29.0	3.4	4.9	17.2	18.9
Lanesborough/Ballyleaigue	6.6	5.4	16.9	23.7	2.8	7.6	22.5	14.7
Creagh (Ballinasloe)*	7.5	8.2	12.1	22.4	4.6	6.7	27.8	10.8
Strokestown	7.2	4.8	2.8	27.1	4.4	10.8	18.7	24.3
Elphin	8.0	6.4	7.5	19.8	5.3	8.0	25.1	19.8
Roosky	3.2	6.9	14.4	23.9	3.7	9.6	21.3	17.0
Frenchpark	3.5	9.7	8.3	25.7	4.9	9.0	18.1	20.8
Termonbarry	0	5.5	11.0	27.6	5.5	9.8	19.0	21.5
Knockcroghery	5.0	7.1	11.3	21.3	7.8	14.2	20.6	12.8
Ballinlough	5.4	7.5	15.1	19.4	3.2	5.4	20.4	23.7
Cloonfad	3.0	8.0	24.0	29.0	1.0	6.0	14.0	15.0
Loughglinn	7.5	3.8	15.1	17.0	7.5	9.4	24.5	15.1

www.wdc.ie

LookWest.ie



National Skill Shortages 2012

- ▶ **Information Technology:** software engineers & developers, network & security experts, web developers, technical support
- ▶ **Engineering:** electrical (e.g. energy generation), chemical, design (e.g. medical devices), QC, mechanical
- ▶ **Science:** manufacturing technicians, laboratory analysts, chemists, biologists, nutritionists, R&D project managers

www.wdc.ie

LookWest.ie



National Skill Shortages 2012

- ▶ **Health & social care:** care assistants, specialist nurses, medical practitioners
- ▶ **Craft:** meat cutters/de-boners **Clerical:** multilingual accounts
- ▶ **Sales & Marketing:** technical sales reps, contact centre roles with European languages (German, Nordic), customer care & support, online marketing & sales

www.wdc.ie

LookWest.ie



National Skill Shortages 2012

- ▶ **Transport & Logistics:** supply chain managers with foreign languages
- ▶ **Financial:** credit & risk management, compliance, solvency/restructuring, insurance, regulatory standards, financial software
- ▶ **Green economy:** energy generation, waste management, water supply

www.wdc.ie

LookWest.ie



New FDI Jobs

- ▶ **New FDI jobs mainly in:** ICT, life sciences, financial services, business services & digital media
- ▶ **Skills** needed for new FDI jobs in 2011
 - ▶ ICT, science & engineering skills (47%)
 - ▶ Business, financial & accounting skills (19%)
 - ▶ Manufacturing, distribution & logistics skills (14%)
 - ▶ Sales & marketing skills including languages (12%)

www.wdc.ie

LookWest.ie



WESTERN REGION GROWTH SECTORS

- ▶ **Green economy**
- ▶ **Food**
- ▶ **Tourism**
- ▶ **Caring**
- ▶ **Life Sciences**
- ▶ **Software, Financial & International services**
- ▶ **Creative sector**

www.wdc.ie

LookWest.ie



Western Region Growth Sectors (Companies in Co Roscommon)

- ▶ **Green economy** – wood energy, wind & ocean energy, retro-fitting, energy efficiency
 - ▶ Green Grove Wood Energy, Eco Smart Designs
- ▶ **Food** – higher value-added, organic, artisan, functional, marine, R&D
 - ▶ Connacht Gold, Oliver Carty, Roscommon Chocolate, Hooker Brewery, Hillcrest bakery
- ▶ **Tourism** – outdoor & adventure, cultural, festivals, events (e.g. triathlons), water-based
 - ▶ Lough Key Forest Park, Cruachan Ai, Hodson Bay Water Sports, Abbey Hotel, Shannon River Boat Hire
- ▶ **Caring** – elder care, residential & home care
 - ▶ Roscommon Home Services

www.wdc.ie

LookWest.ie



Western Region Growth Sectors (Companies in Co Roscommon)

- ▶ **Life Sciences (medical devices & pharmaceuticals)** – R&D, product development, 'super-operatives'
 - ▶ Ansamed, Harmac Medical, Athlone Pharmaceuticals, Alkermes, Innocoll Technologies
- ▶ **Software, Financial & International services** – call centres, back office, software development, computer programming
 - ▶ Flexible Contact Solutions, Trojan IT, myITDepartment, TMG Translation, Penta Networks
- ▶ **Creative sector** – gaming, digital media, film & TV, arts, crafts, increasing exports
 - ▶ Willow Design & Publishing, Creative Freedom Design, Bog Buddies

www.wdc.ie

LookWest.ie



FURTHER INFORMATION

- ▶ Expert Group on Future Skills Needs
www.skillsireland.ie
- ▶ Enterprise Ireland www.enterprise-ireland.com
- ▶ IDA Ireland www.idaireland.com
- ▶ Roscommon County Enterprise Board
www.roscommon.ie
- ▶ Roscommon Business Network
www.roscommonbusinessnetwork.ie
- ▶ LookWest www.lookwest.ie

www.wdc.ie

LookWest.ie



Thank You

Pauline White
Policy Analyst

Western Development Commission

Tel: 094 986 1441

E-mail: paulinewhite@wdc.ie

www.wdc.ie

LookWest.ie

